

# **CFI Bootcamp**

*Flight Instructor Training*

Navigation

# Creating Your First Cross-Country Flight with ForeFlight

## The End to End Process

# Getting ForeFlight Ready

- Subscription and updates – More - Downloads
- Internet connection
- Aircraft Profile – More - Profiles
- Inputting performance data



# Today's Demo

- I'm using Performance Plus – Highest Level Subscription
- Basic version doesn't have Profile View
- Basic/Pro versions don't have extra layers in the profile view for clouds, turbulence, Icing etc.
- Basic/Pro don't have 3D view or Flights/Satellite



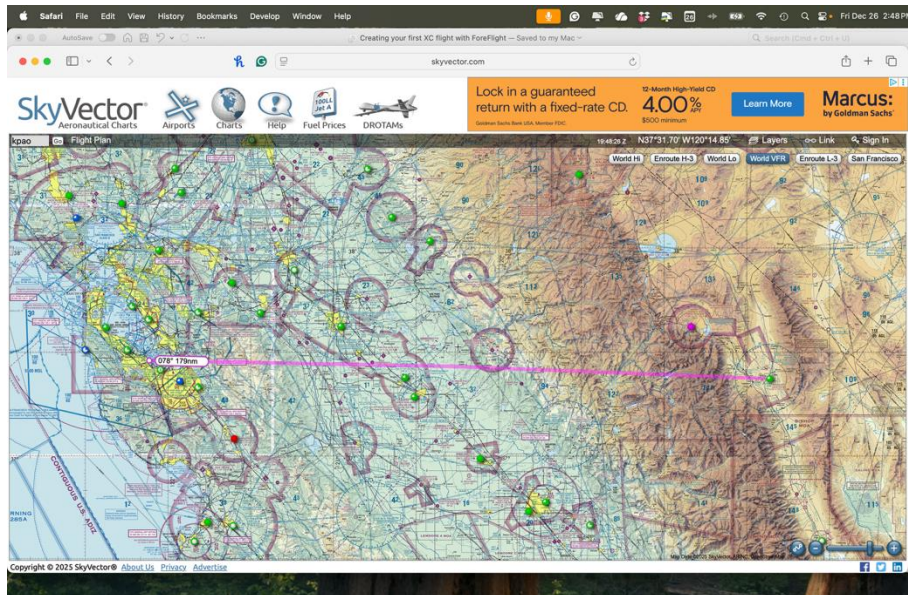
# What ForeFlight can't do

- Pick the best route
- Apply risk management automatically
- Work around your personal minimums



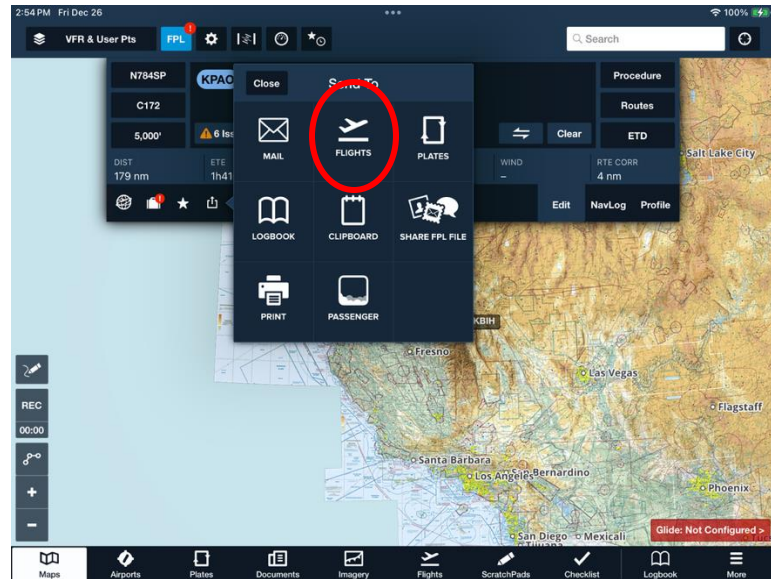
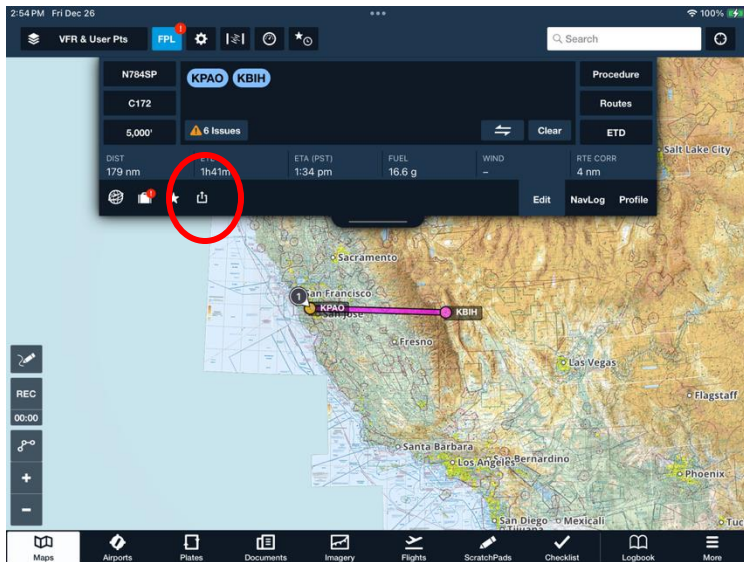
# Let's Make Our First Flight Plan

- Departing KPAO – Palo Alto, CA
- Arriving KBIH – Bishop, CA
- Use a C172S



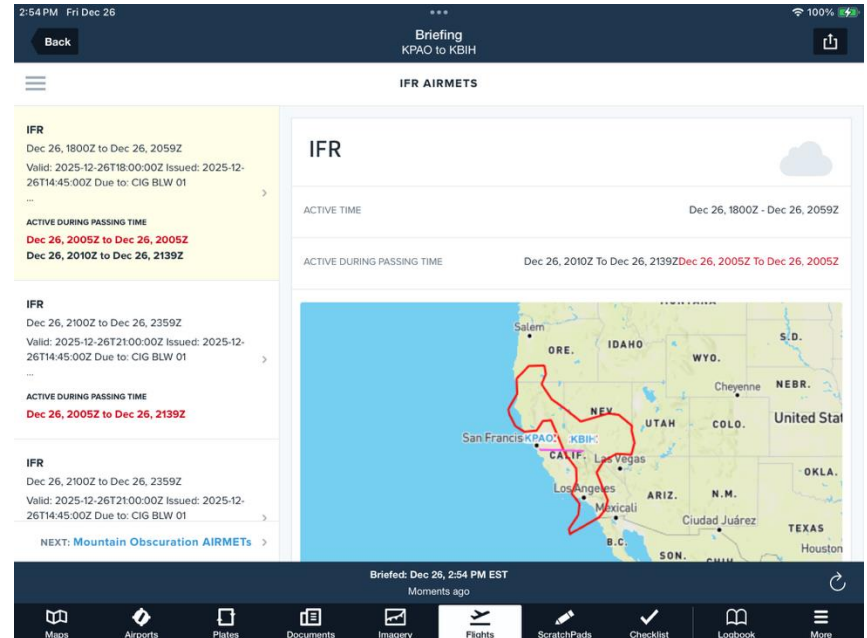
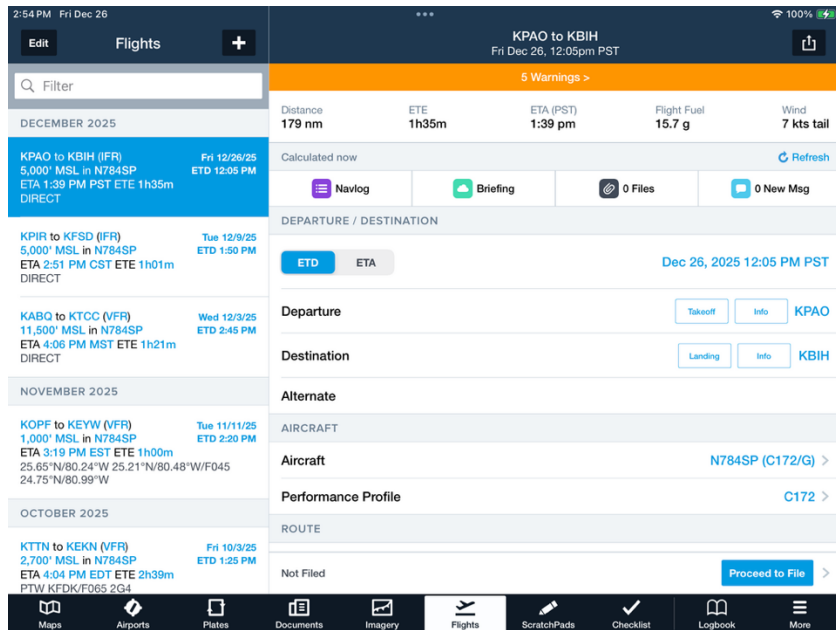
# Basic Steps

- Get a Weather Briefing – FPL – Share button – Flights - Briefing



# Basic Steps

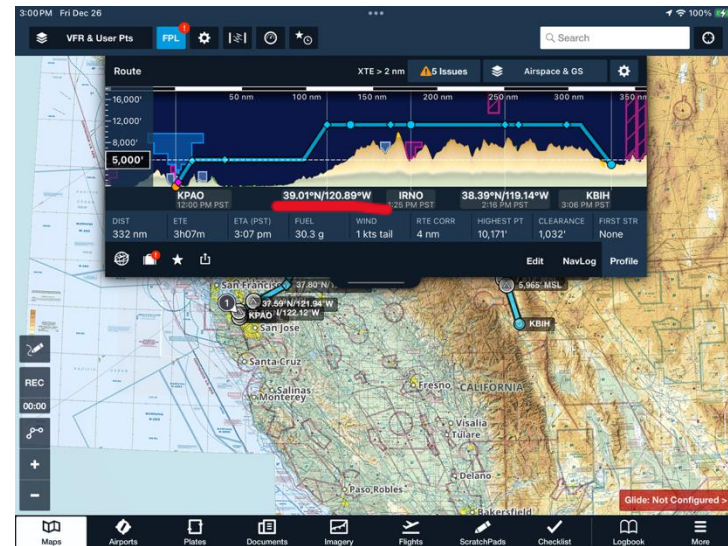
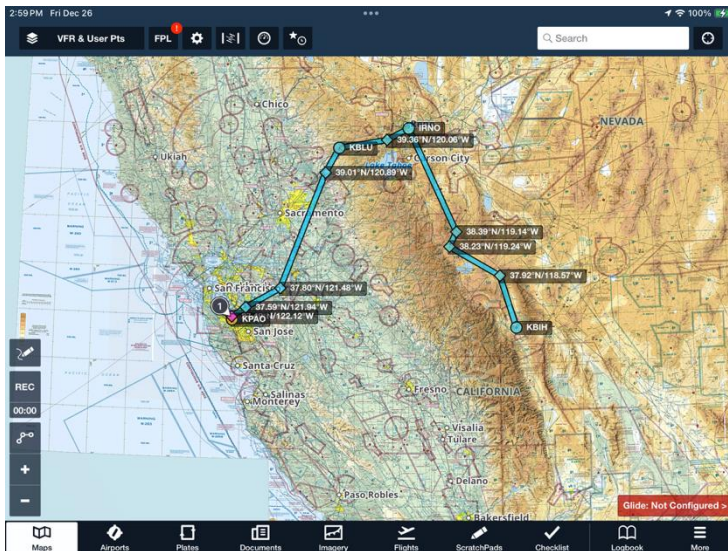
- Get a Weather Briefing – FPL – Share button – Flights -





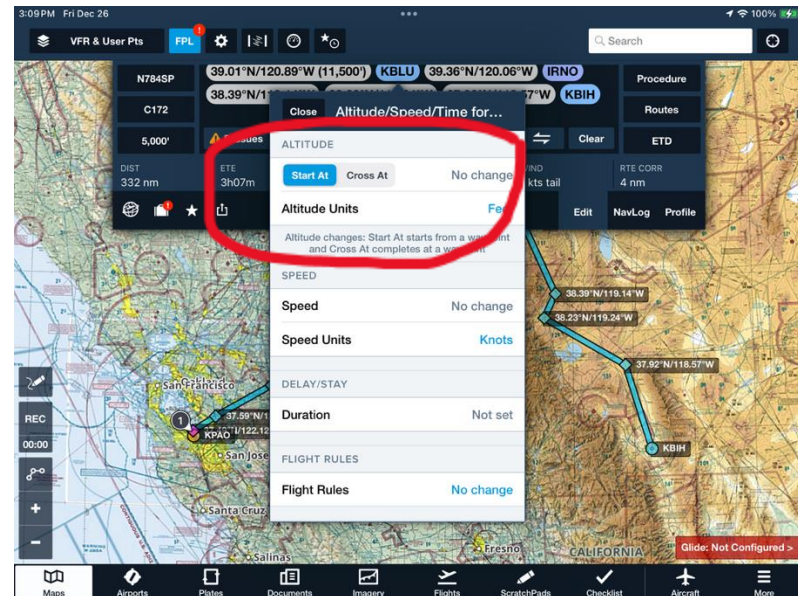
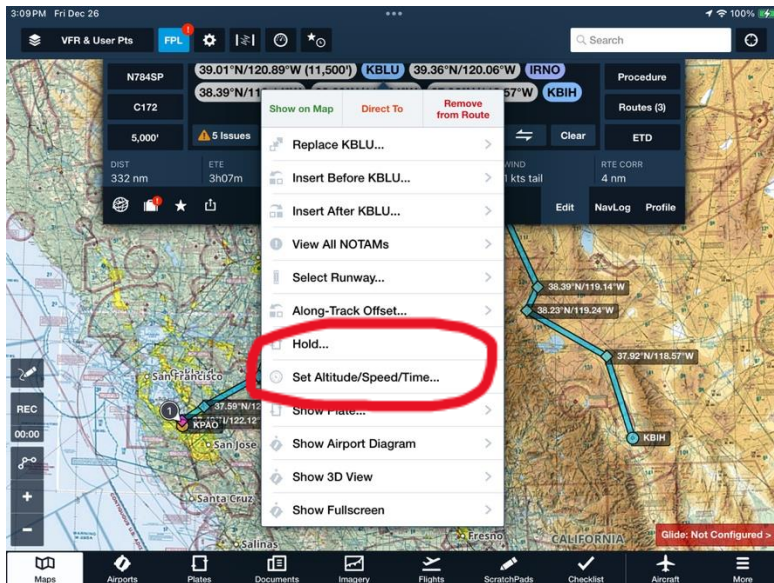
# Basic Steps

- Determine an appropriate route and altitudes
- Insert a waypoint whenever you want to change altitude



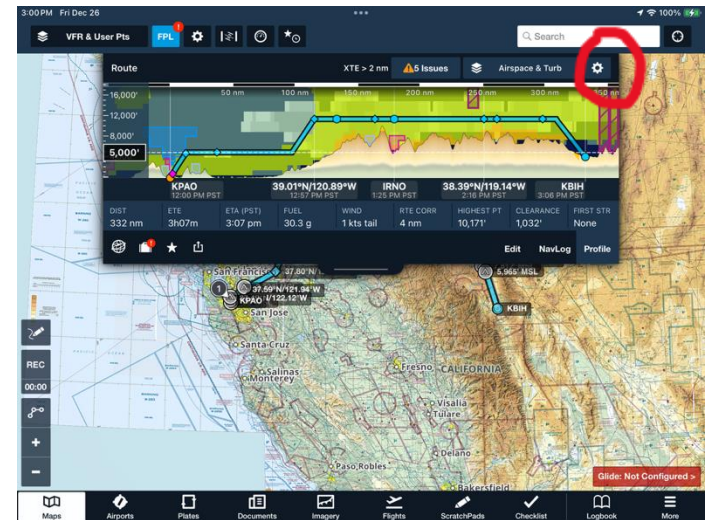
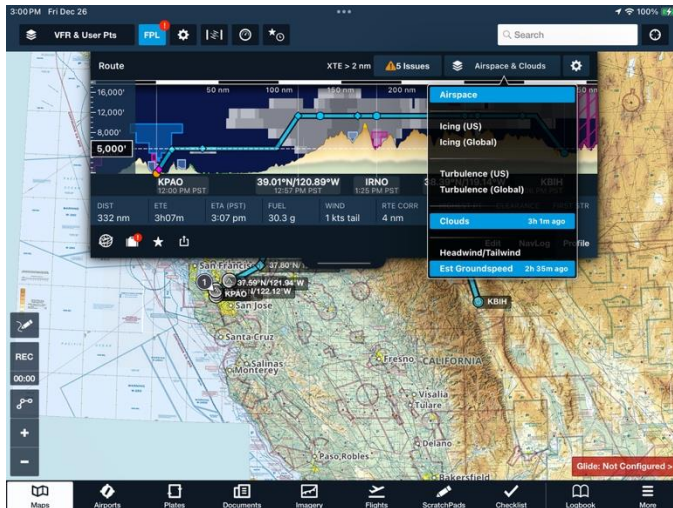
# Basic Steps

- ForeFlight supports multiple tops of climbs
- Click the waypoint then altitudes – headings - speeds



# Basic Steps

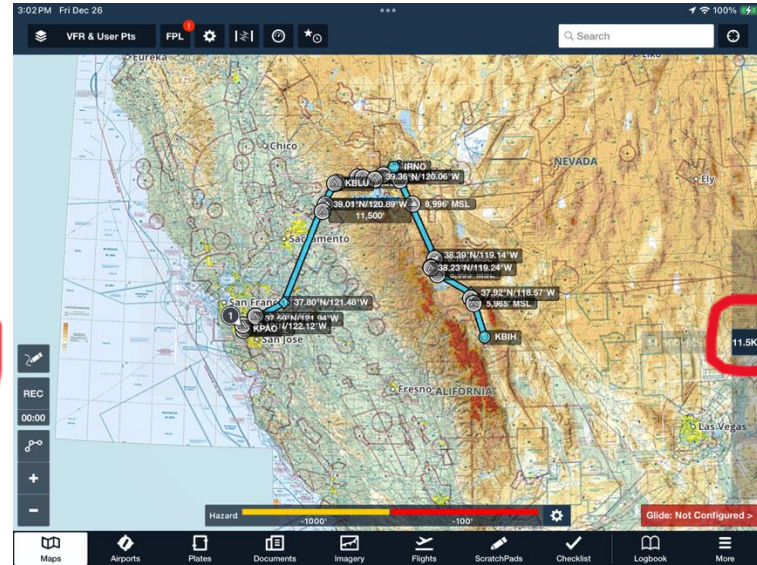
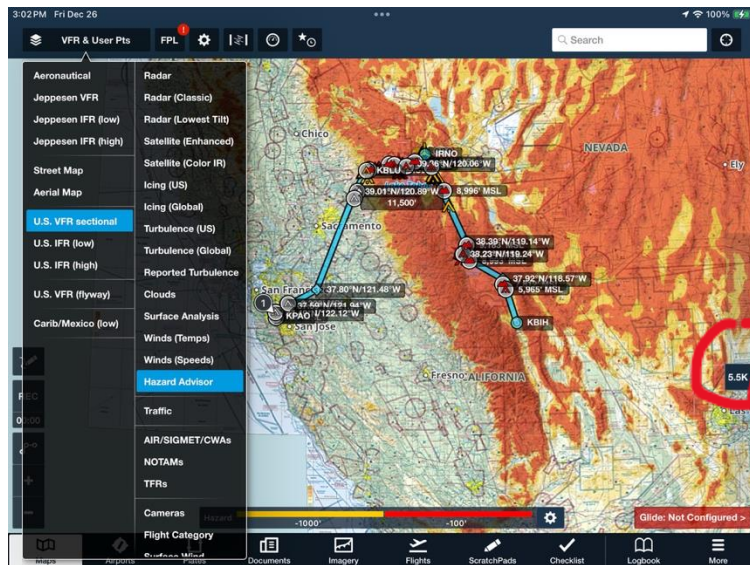
- Use the profile view first – Turn on Airspace, Clouds and Turbulence
- 4nm corridor width by default – change by the Gear tool





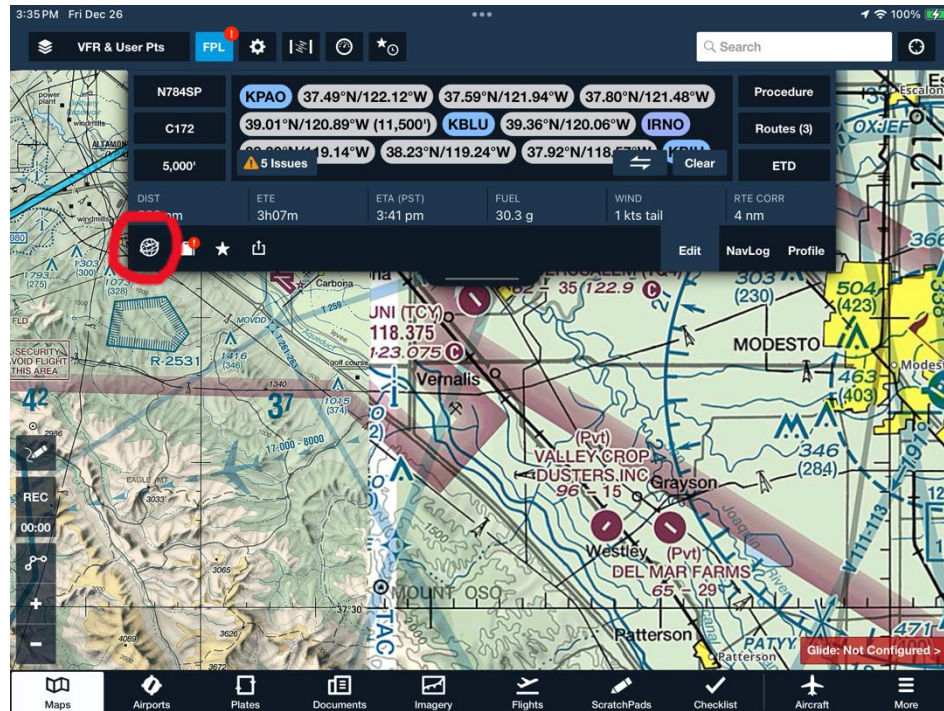
# Basic Steps

- Hazard advisor works good for planning – Maps – Layers – Hazard Advisor – Use the slider bar on the right to change altitude – Corridor width is 4nm by default – obstacles populate in the corridor in yellow within 1000 feet and red within 100 feet.



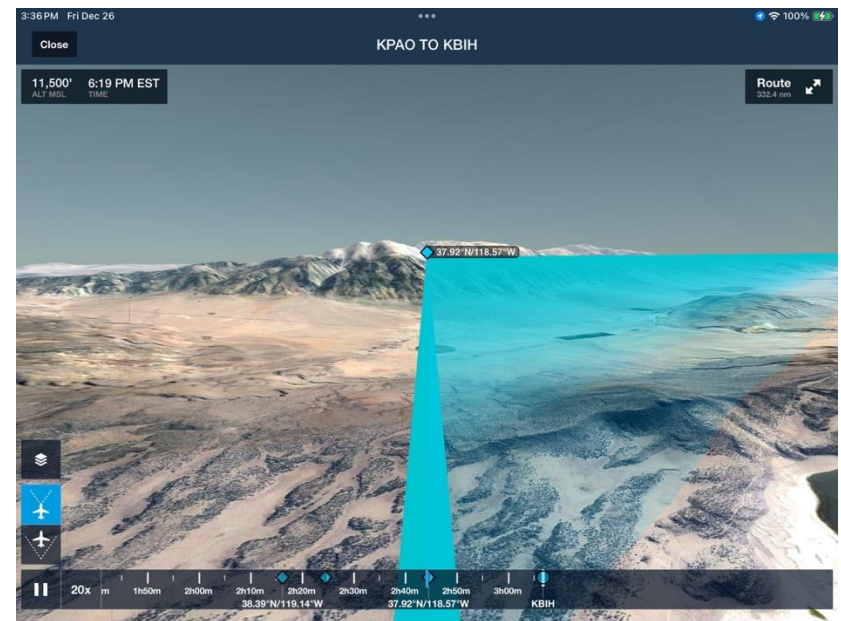
# Basic Steps

- Use the fly tool to fly the route in 20x speed



# Basic Steps

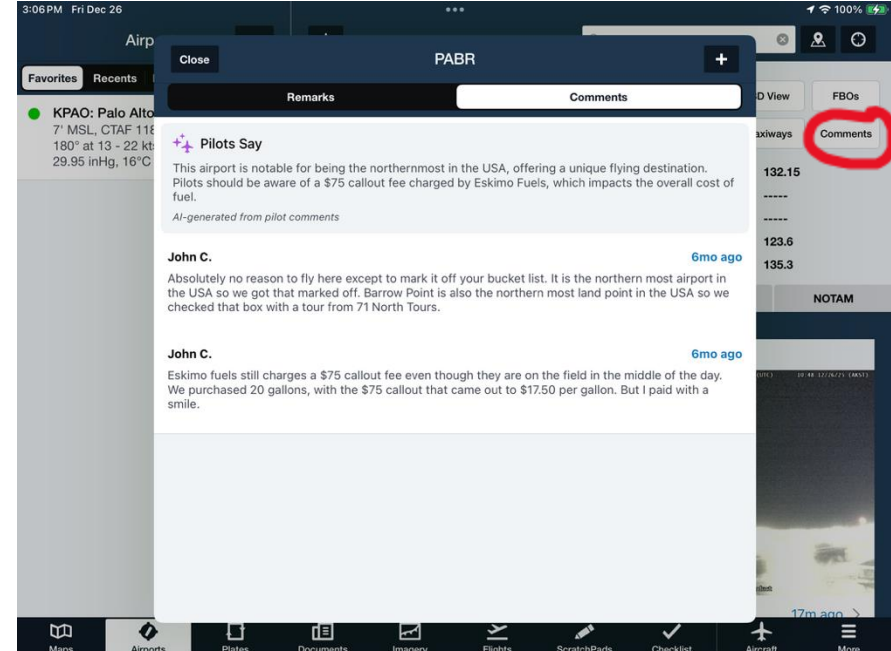
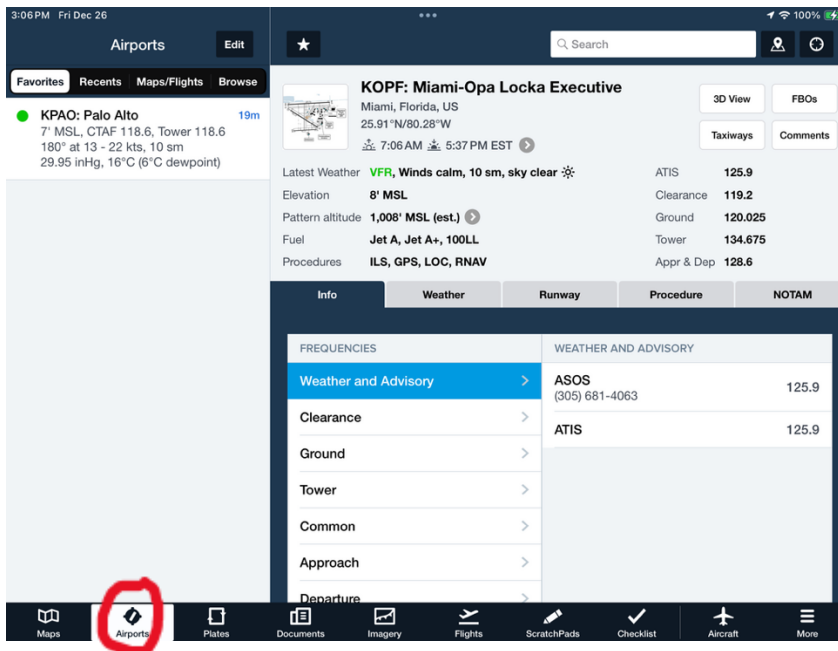
- Use the fly tool to fly the route in 20x speed





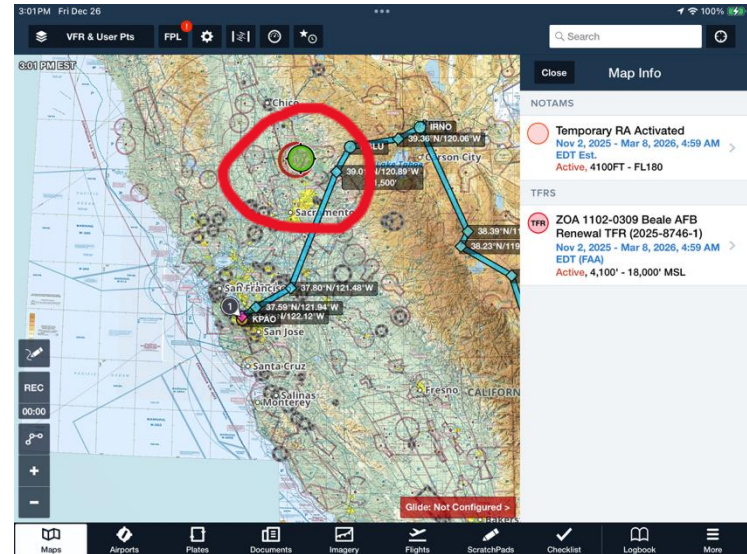
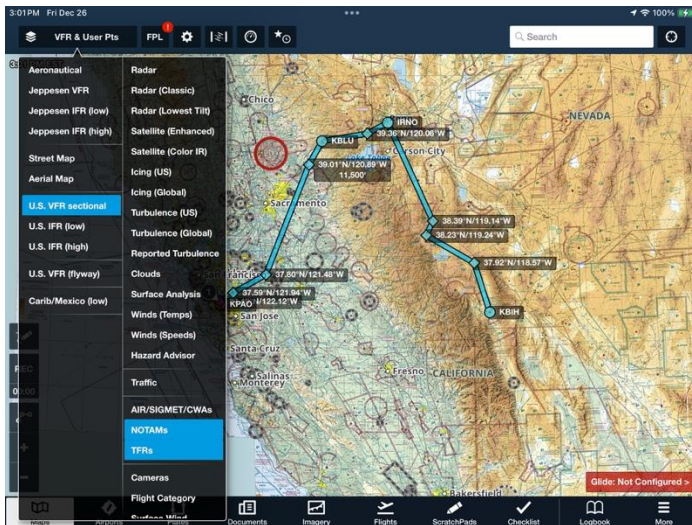
# Basic Steps

- Use the 3D view to look at the airport environment and terrain
- In the airports tab review the comments – crowd sourced



# Basic Steps

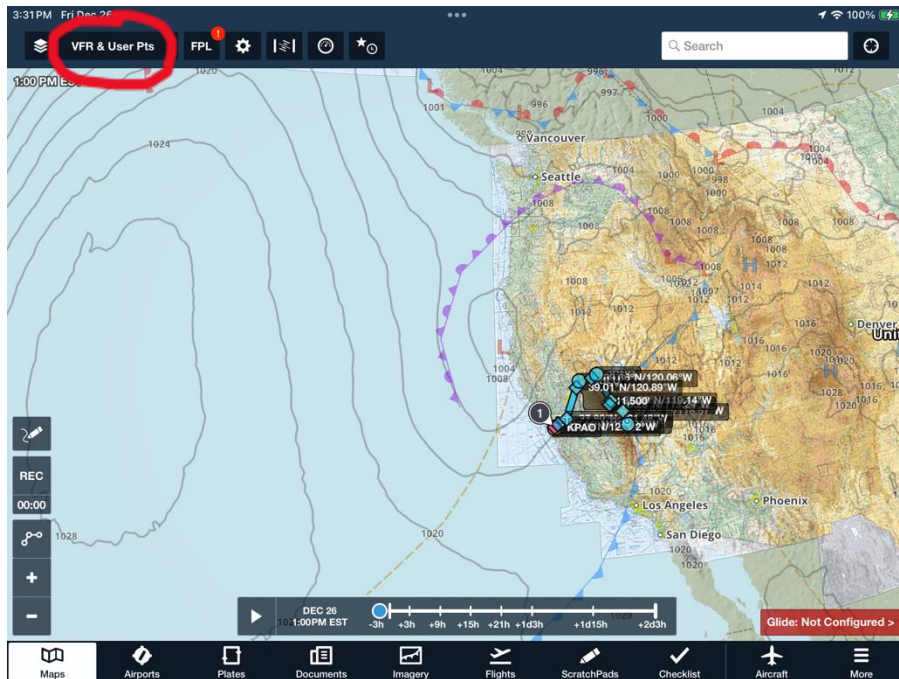
- In the maps tab turn on TFRs and NOTAMS – Click them for info





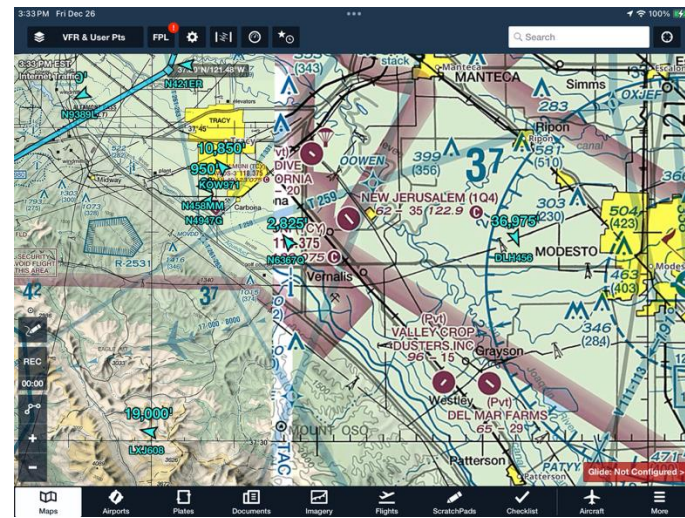
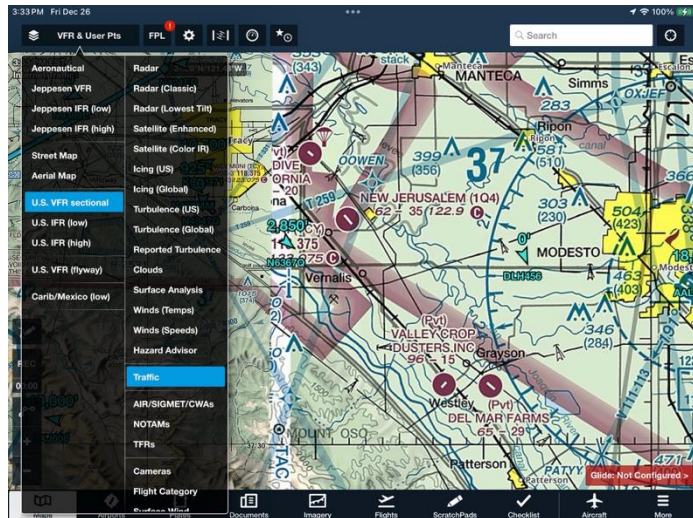
# Long distance planning tools

- In the Maps tab turn on the surface analysis layer



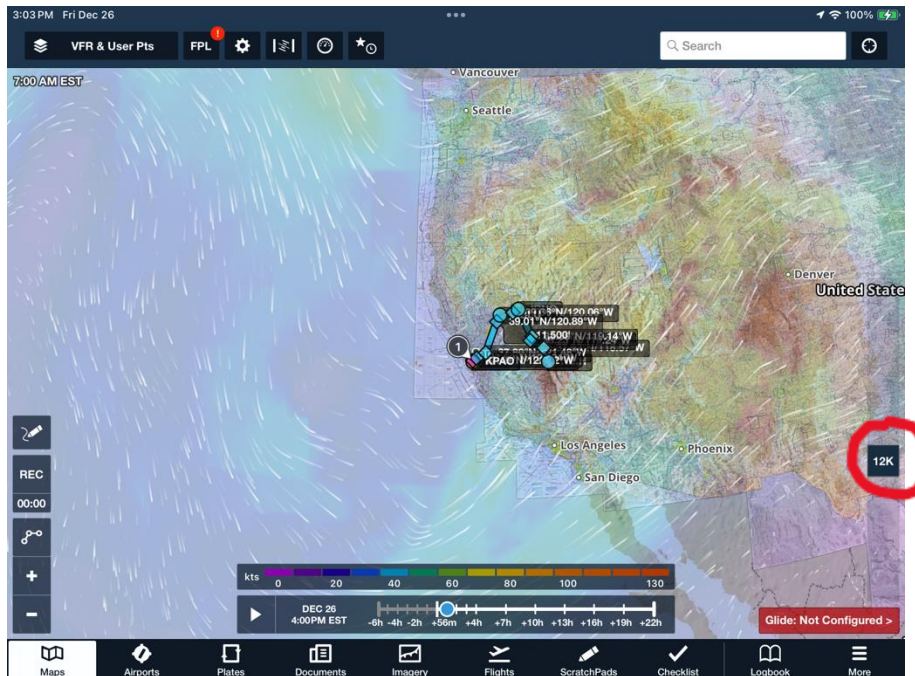
# Long distance planning tools

- Use the traffic layer to see ADS-B traffic – Gauge how busy or not a place is



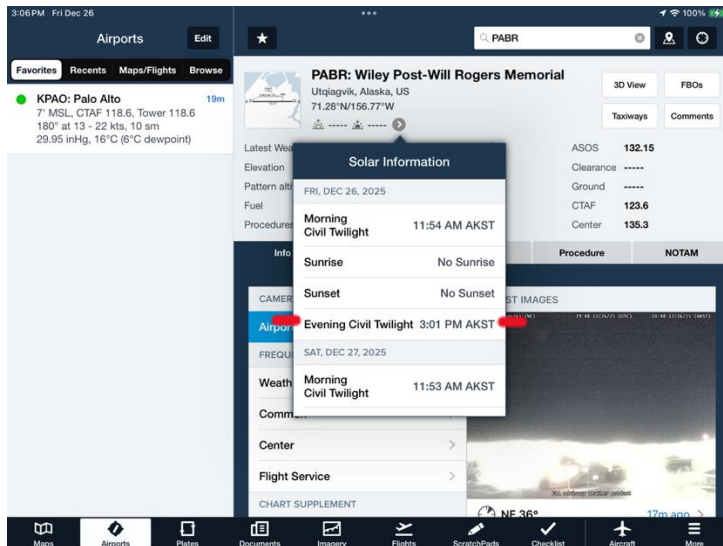
# Long distance planning tools

- In the maps tab turn on Wind(Speeds) and select the altitude



# Nice Extra Features

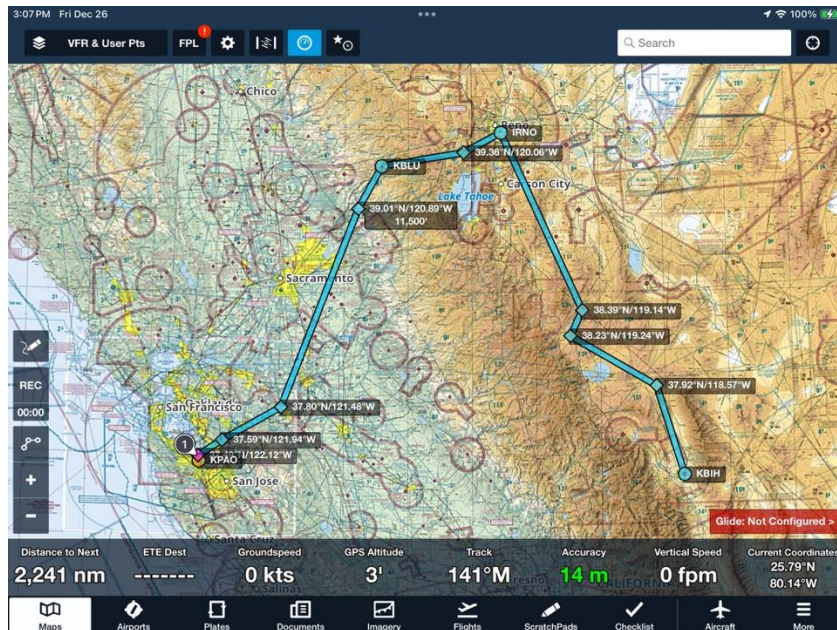
- Airports tab – Solar data available – Sunset/Sunrise, Civil twilight
- You can begin all night training for any rating at the end of civil twilight – One hour after sunset is only for carrying passengers. Night 61.1 and passengers 61.57
- Some airports have webcams – Airports tab - Info – Cameras – Try PABR – Wiley Post the farthest northern airport in Alaska and US





# Extra things to know

- Turn off chart legends – Gear – Map Touch Actions – No action
- Connect Sentry, Stratus etc. to ForeFlight by WIFI on iPad
- You can customize the displayed fields at the bottom of the map tab - More



From us to you...

Start your CFI Training and Finish it!



[Power Hours](#) [Lesson Plans](#) [Courses](#) [Resources](#) [Calendar](#) [Online Store](#)

[Preview Our Online Course](#)

[Log in](#)

## Your Flight Instructor Training Starts Here.

A Complete Structured Training System,  
Developed by Industry Leaders.

Palo Alto, CA and Miami, FL

[Learn More.](#)



We get the job done

**CFI Bootcamp**  
Flight Instructor Training

In Conclusion...

## Past Power Hour Information

[Click here to get outlines of previous power hours](#)

### Power Hour Lesson Outlines

Created Around Hour Long Weekly Live Topic Specific Instructional Training.

Powered by Bootcamp +



How to Make Being a Flight Instructor  
a Career

March 8, 2025 at 12:00:00 PM




A look into the products CFI  
Bootcamp has to offer

February 22, 2025 at 12:00:00 PM

From us to you...

## See Every Full-Length Power Hour

[Click here to get a huge discount to our membership site to see every previous power hour – Over 240 of them](#)



### Resources | Content

Bootcamp	Included
Flight Training the Way I See It - Podcast	<input type="checkbox"/>
Weekly Short Subject Videos	<input type="checkbox"/>
Private Pilot Ground Schools   Video Course	<input type="checkbox"/>
Bootcamp +   Networking Community	<input type="checkbox"/>
Entire Power Hour Lesson Catalog	<input type="checkbox"/>
Focused Training Resources	<input type="checkbox"/>

By clicking "Complete my purchase" you agree to the [Terms and Privacy Policy](#). Billed after 7 Day Free Trial Expires.

**\$22.00 / Monthly Subscription – Billed After 7 Day Trial**

7 day trial

Subtotal: \$22.00 USD every month

Trial: 7 day trial

Discount: 59% off forever ✕

Due Now: \$0.00 USD

Logout

mikeshiflett@gmail.com

Card number MM / YY

Your payment information will be stored on a secure server for future purchases

Complete my purchase

It will work out to be \$9/month after the 7-day Free Trial!

