

CFI Bootcamp

Flight Instructor Training

Using Technology

Teaching IFR Using ForeFlight

Using Technology for Better Training

Getting ForeFlight Ready

- Subscription and updates – More - Downloads
- Internet connection
- Aircraft Profile – More - Profiles
- Inputting performance data



Today's Demo

- I'm using Premium – Highest Level Subscription
- Basic version doesn't have Profile View
- Basic/Essential versions don't have extra layers in the profile view for clouds, turbulence, Icing etc.
- Basic/Essential don't have 3D view or Flights



What ForeFlight can't do

- Pick the best route
- Apply risk management automatically
- Work around your personal minimums



We Will Cover – Teaching IFR using ForeFlight

- Features in the Premium Subscription
- Why you need Jeppesen Charts
- Teaching Weather using ForeFlight
- Linking a Cloud Drive to ForeFlight
- Importing PDFs



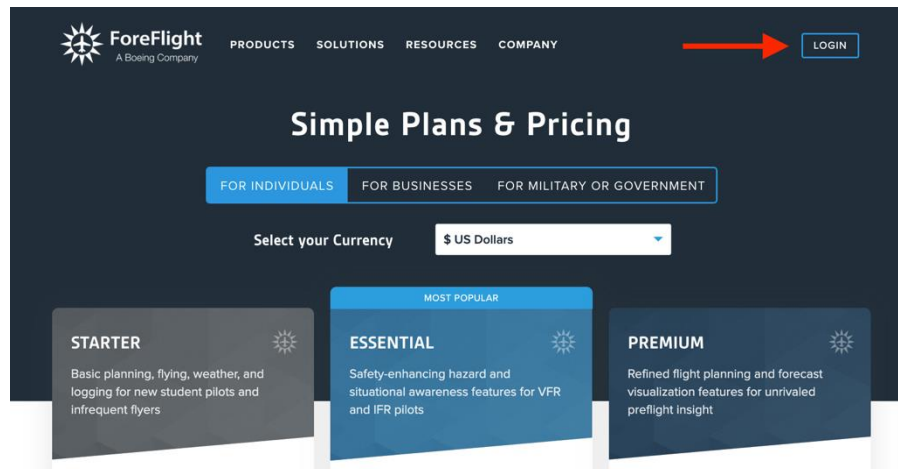
We Will Cover – Teaching IFR using ForeFlight

- Route Advisor
- Multiple Tops of Climbs in a Flight Plan
- Holding
- 3D Flight
- ForeFlight and Simulators
- Synthetic Vision and Sentry



Features in the Premium Subscription

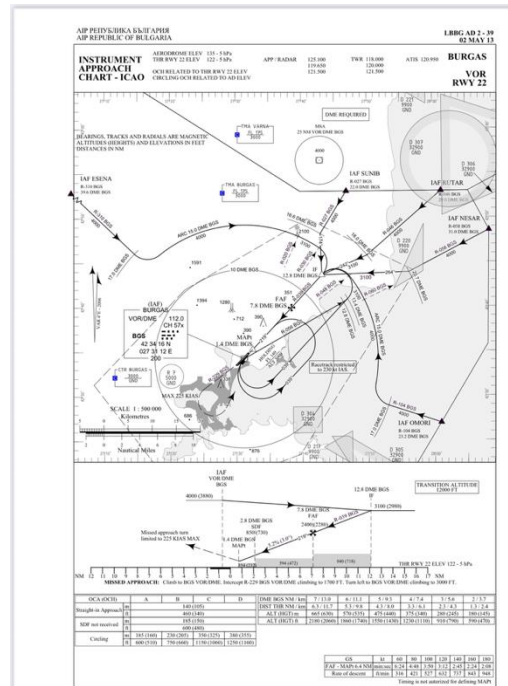
- Clouds, Icing, Turbulence, and Wind in Profile View
- Surface Analysis Chart
- Animated Wind Speeds and Temperature



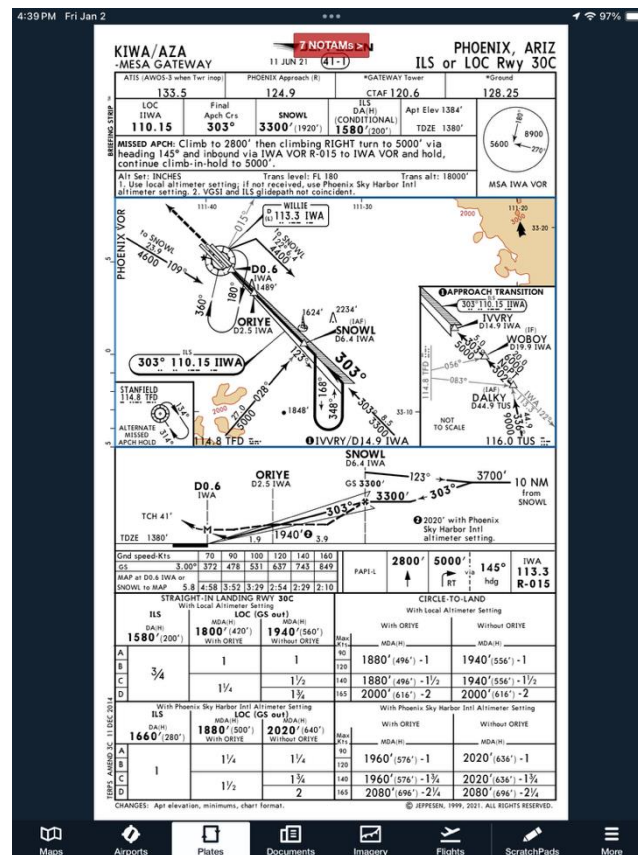
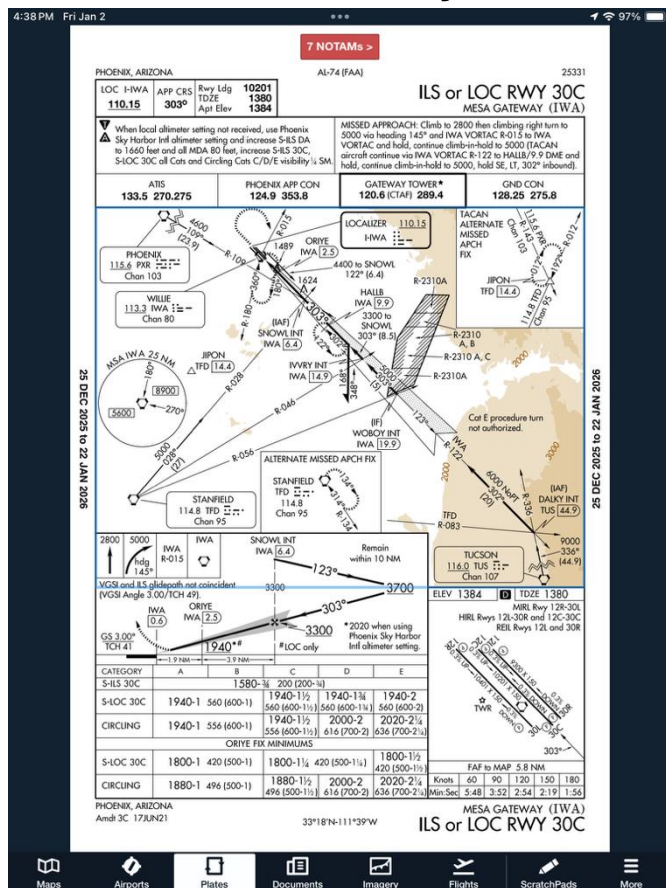
Features in the Premium Subscription

- Expanded Performance Capabilities
- 3D View and 3D Flights
- Ability to Link a Cloud Drive – Also available in Essential

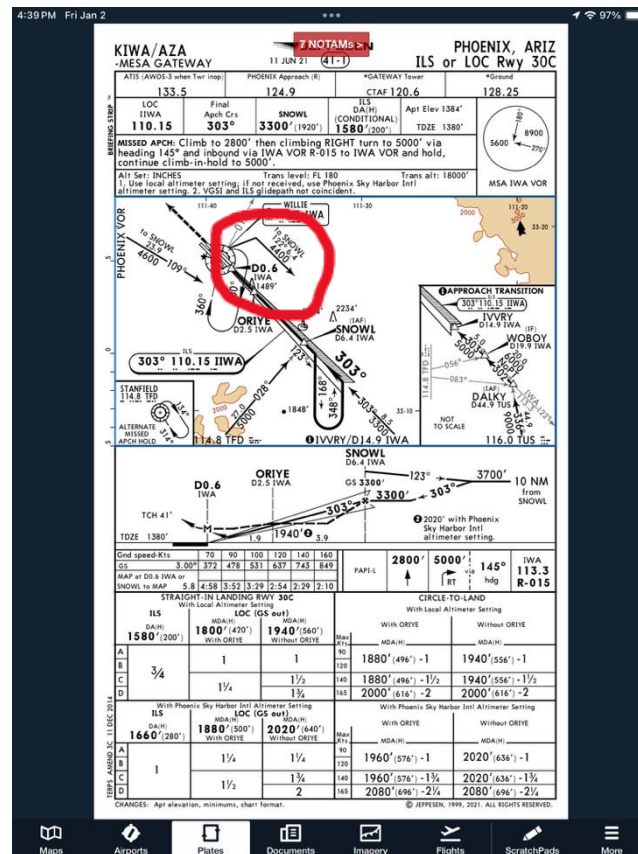
- If you are going to be a Pilot as a Job, you will use them
- Forces the worlds charts into a consistent format



- Declutters many hard to read FAA charts – KIWA for example

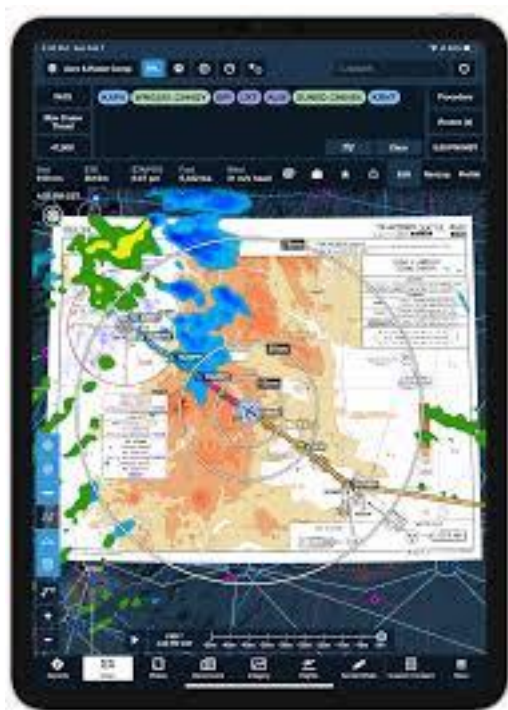


- Did you miss the feeder route on the FAA chart?



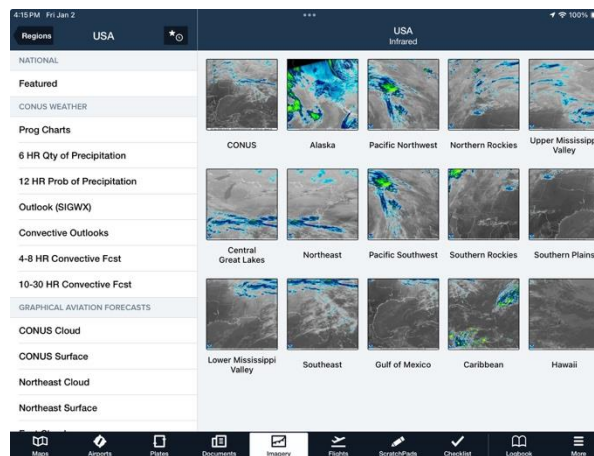
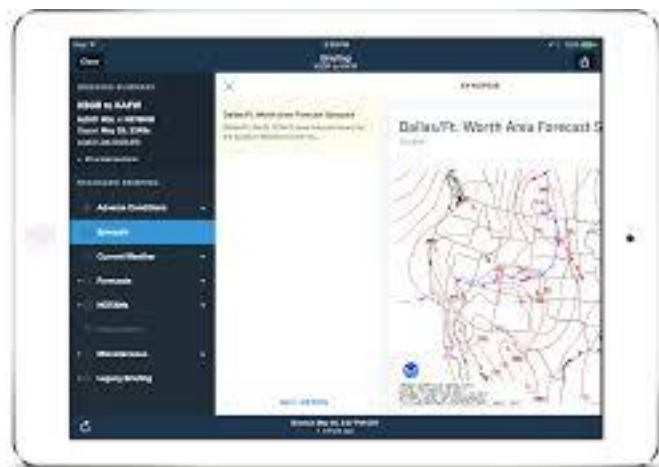
Why you Need Jeppesen Charts

- Alternate airports restrictions are on every airport info chart
- SIDS and STARS are to Scale and can be Geo referenced
- You can charge students to teach them to use these charts



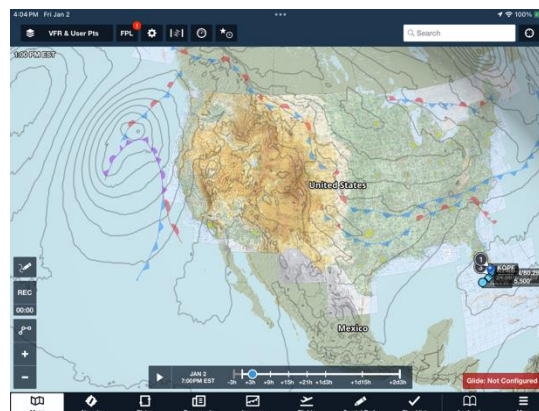
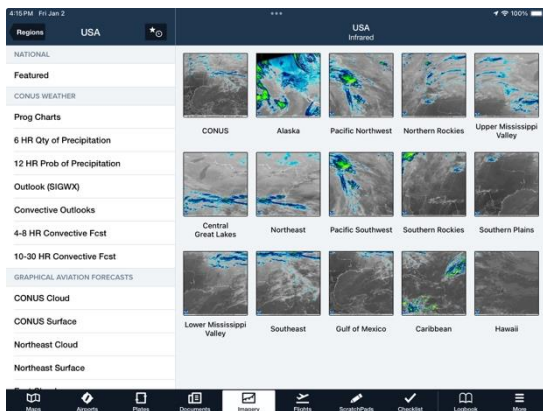
Teaching Weather Using ForeFlight

- Weather Briefings
- Weather Imagery
- Radar and the difference between lowest tilt and composite



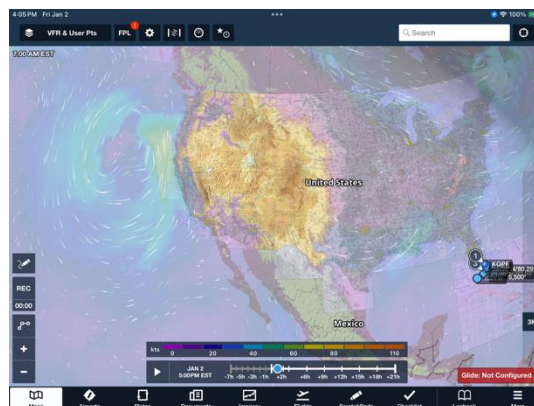
Teaching Weather Using ForeFlight

- Satellite imagery – Infrared and Visible
- Surface Analysis Chart and What Fronts are
- Low pressure areas move with the Jetstream – Unless Cutoff



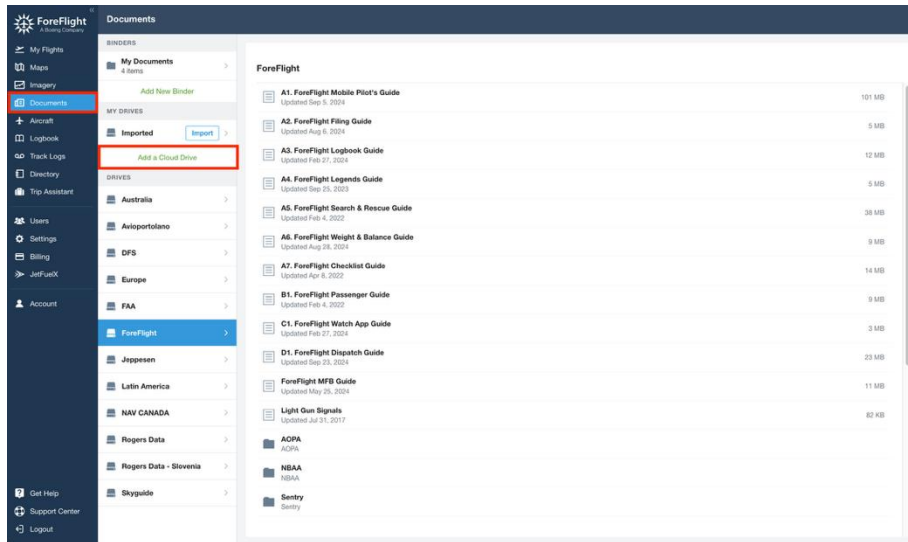
Teaching Weather Using ForeFlight

- Animated Winds – 30,000 ft. typical Jetstream altitude
- Fronts move relative to the Low Pressure Area – Low altitude wind
- Semi permanent High and Low Pressure Areas
- Fog
- Icing



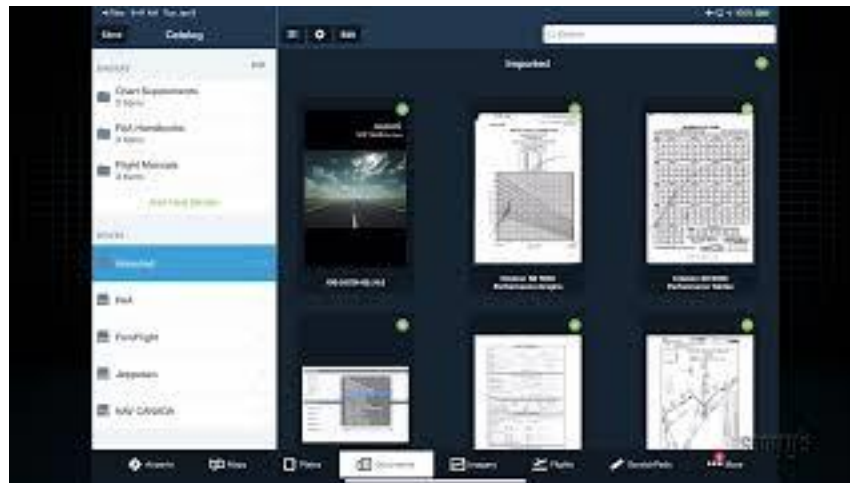
Linking a Cloud Drive to ForeFlight

- You have everything you need to teach a lesson
- Any changes made to the folder transfer automatically
- Supports Dropbox, Box, S2 and OneDrive - Only
- Can only be set up from ForeFlight Web. Foreflight.com



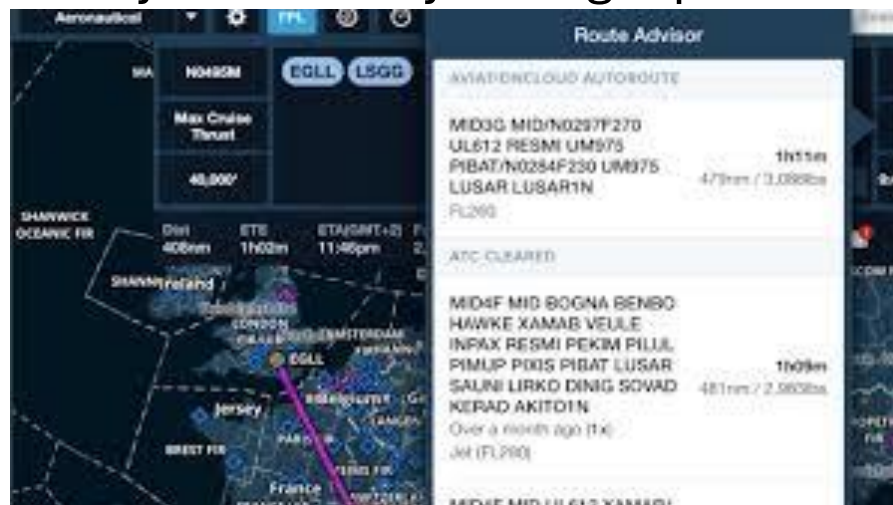
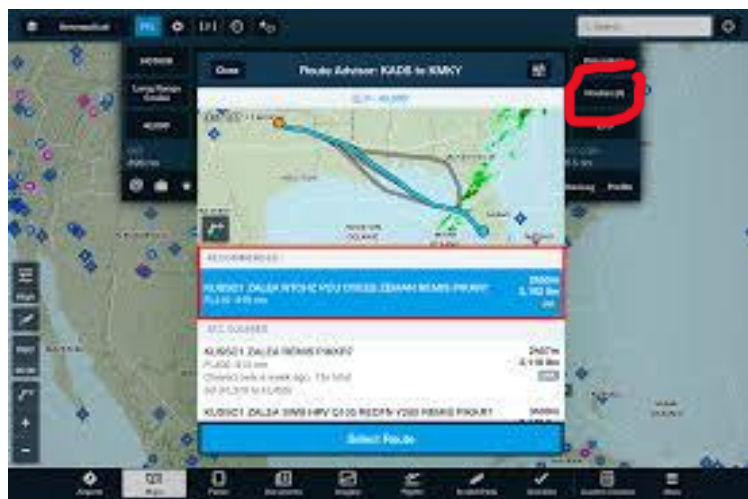
Importing PDFs

- Can be done with Web, iPad or iPhone
- Lightning fast PDF reader
- You can annotate on the PDF
- How you can make a virtual whiteboard – Find white space and Zoom until there is just white space



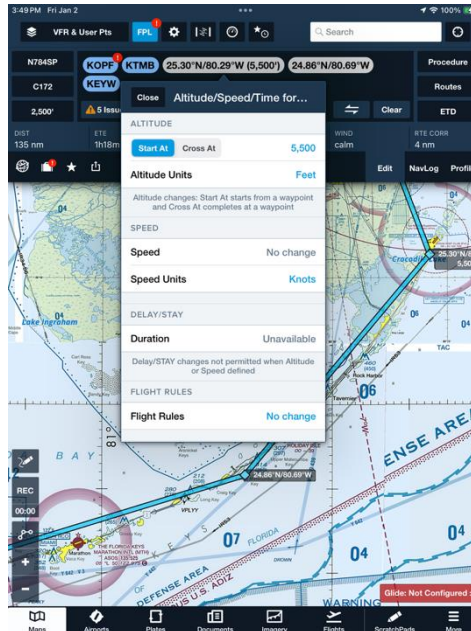
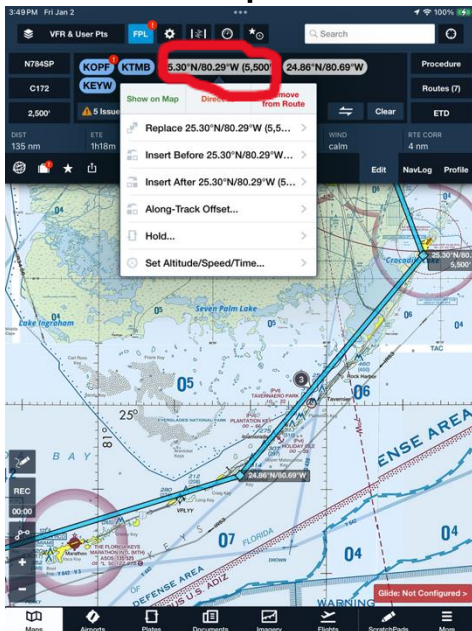
Route Advisor

- In the Flight Plan Tab
- Gives recently given clearances/routes from one airport to another that ATC actually assigned
- Only works for IFR – No data is available for VFR Flights from ATC
- Select the route and it automatically loads into your flight plan



Multiple Tops of Climbs

- The altitude on the left of your flight plan tab MUST be the lowest for the entire route
- You can cross at or start at an altitude at any fix in the flight plan
- In the Edit Flight plan – Click on any fix and choose – Set altitude/speed/time – Select cross at or start at and the altitude



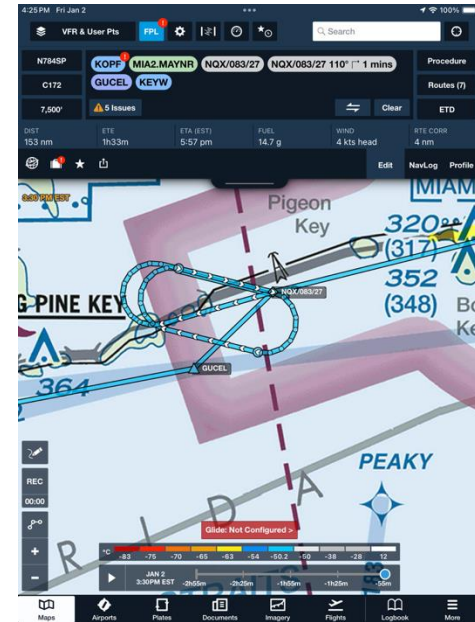
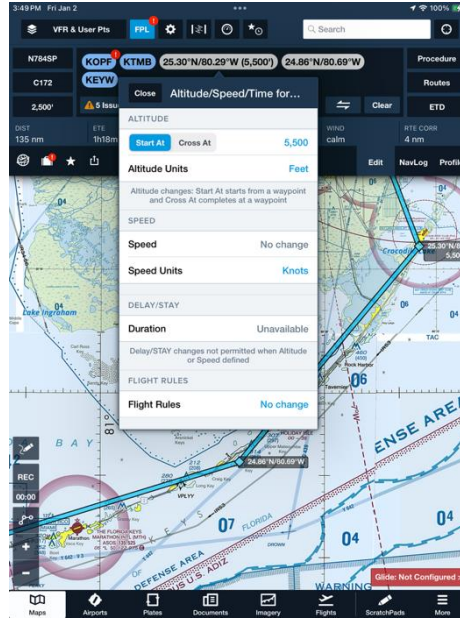
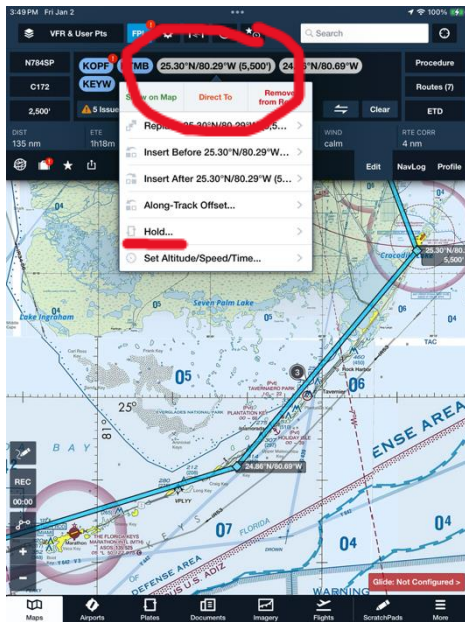
Multiple Tops of Climbs

- From the profile view click on the fix you want to change altitudes
- You may need to zoom in to see it
- Click on the fix and select cross at or start at – input altitude



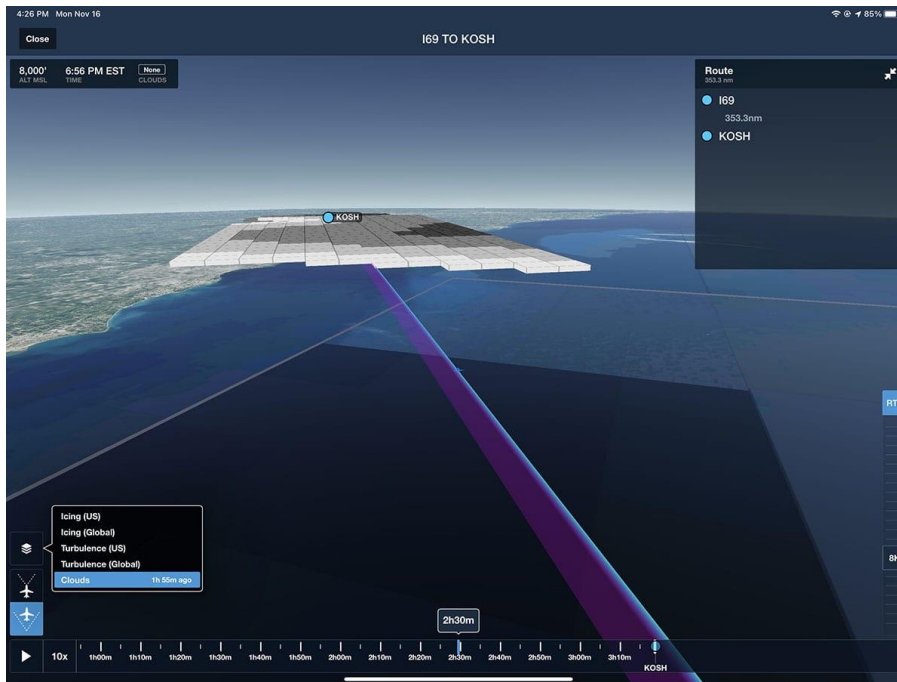
Holding

- Can be at any fix
- Click the fix and choose HOLD
- Input the holding course, distance/time and left or right turns



3D Flight

- Fly your flight plan at 20x speed
- Preview the flight – It uses Google Earth as the imagery
- IFR enroute charts don't show terrain – Check your route



3D View

- See the airport and surrounding area
- See ADS-B traffic



Solar Information

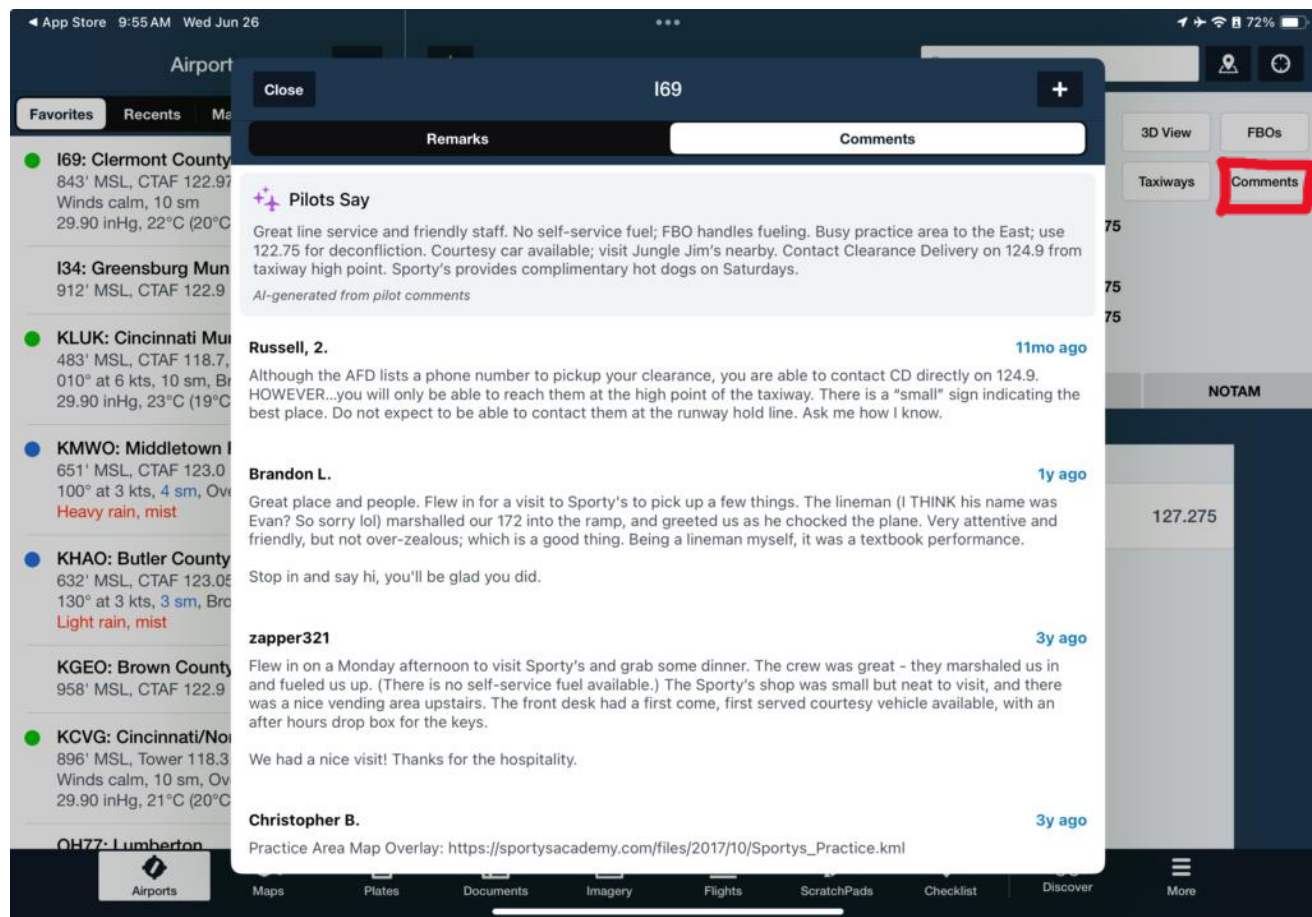
- From the airports tab, input the airport identifier
- Click on the area that has sunrise/sunset icons
- Select the solar data you want – Sunset/Civil Twilight



AI Airport Comments

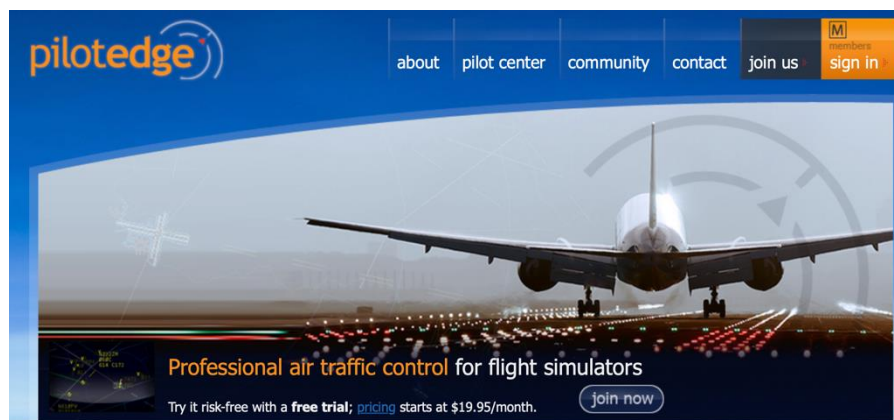
- From the airports tab, input the airport identifier
- Select Comments
- The comments are from pilots about the airport
- The first entry is an AI Summary of comments

AI Airport Comments



Simulators and ForeFlight

- Many broadcast GPS out
- You can connect ForeFlight to the GPS out signal
- You can use ForeFlight as if you were in the airplane
- PilotEdge and GPS out make for super realistic training



Synthetic Vision and Sentry

- Sentry is GPS/ADS-B in/AHRS
- Tap the Synthetic Vision tab at the top of ForeFlight to use it
- Make sure you know how to connect to Sentry prior to flight
- Always carry battery back ups



From us to you...

Start your CFI Training and Finish it!



Your Flight Instructor Training Starts Here.

A Complete Structured Training System,
Developed by Industry Leaders.

Palo Alto, CA and Miami, FL

[Learn More.](#)



We get the job done

CFI Bootcamp
Flight Instructor Training

In Conclusion...

Past Power Hour Information

[Click here to get outlines of previous power hours](#)

Power Hour Lesson Outlines

Created Around Hour Long Weekly Live Topic Specific Instructional Training.

Powered by Bootcamp +



How to Make Being a Flight Instructor
a Career

March 8, 2025 at 12:00:00 PM




A look into the products CFI
Bootcamp has to offer

February 22, 2025 at 12:00:00 PM

From us to you...

See Every Full-Length Power Hour

[Click here to get a huge discount to our membership site to see every previous power hour – Over 240 of them](#)



Resources | Content

Bootcamp	Included
Flight Training the Way I See it - Podcast	<input checked="" type="checkbox"/>
Weekly Short Subject Videos	<input checked="" type="checkbox"/>
Private Pilot Ground Schools Video Course	<input checked="" type="checkbox"/>
Bootcamp + Networking Community	<input checked="" type="checkbox"/>
Enter Power Hour Lesson Catalog	<input checked="" type="checkbox"/>
Focused Training Resources	<input checked="" type="checkbox"/>

By clicking "Complete my purchase" you agree to the [Terms and Privacy Policy](#). Billed after 7 Day Free Trial Expires.

\$22.00 / Monthly Subscription – Billed After 7 Day Trial

7 day trial

Subtotal: \$22.00 USD every month

Trial: 7 day trial

Discount: 59% off forever X

Due Now: \$0.00 USD

Logout

mikeshiftett@gmail.com

Card number MM / YY

Your payment information will be stored on a secure server for future purchases

Complete my purchase

It will work out to be \$9/month after the 7-day Free Trial!

