

# **CFI Bootcamp**

*Flight Instructor Training*

Using Technology

# Using an EFB - ForeFlight

## Best Practices - Pro Tips

## Today's Bootcamp+ Network Programming

### What's on for Today?



Live Show – 1<sup>st</sup> Hour – Wings Credit  
Open Mic – 2<sup>nd</sup> Hour – End  
Monitor the Chat – Links/Info  
Wings Credit - End of the Live Show

## Today's Bootcamp+ Network Programming

### What's New?



PH Rebroadcasts Wed 8pm Eastern  
Powerhour Podcasts – Full shows  
New CFI Aeronautical Knowledge  
Gaps Course set for release

# Getting ForeFlight Ready

- Subscription and updates – More - Downloads
- Internet connection
- Aircraft Profile – More - Profiles
- Inputting performance data



# Today's Demo

- I'm using Premium – Highest Level Subscription
- Basic version doesn't have Profile View
- Basic/Essential versions don't have extra layers in the profile view for clouds, turbulence, Icing etc.
- Basic/Essential don't have 3D view or Flights



# What ForeFlight can't do

- Pick the best route
- Apply risk management automatically
- Work around your personal minimums



# We Will Cover – Teaching IFR using ForeFlight

- Features in the Premium Subscription
- Why you need Jeppesen Charts
- Teaching Weather using ForeFlight
- Linking a Cloud Drive to ForeFlight
- Importing PDFs



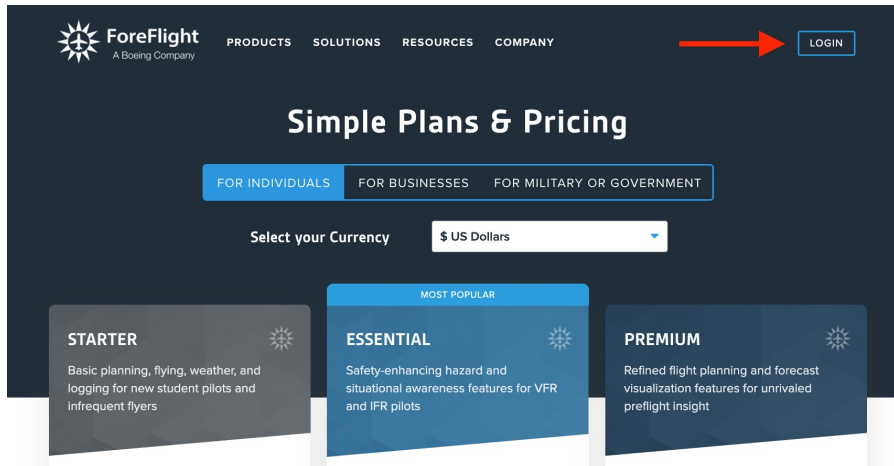
# We Will Cover – Teaching IFR using ForeFlight

- Route Advisor
- Multiple Tops of Climbs in a Flight Plan
- Holding
- 3D Flight
- ForeFlight and Simulators
- Synthetic Vision and Sentry



# Features in the Premium Subscription

- Clouds, Icing, Turbulence, and Wind in Profile View
- Surface Analysis Chart
- Animated Wind Speeds and Temperature



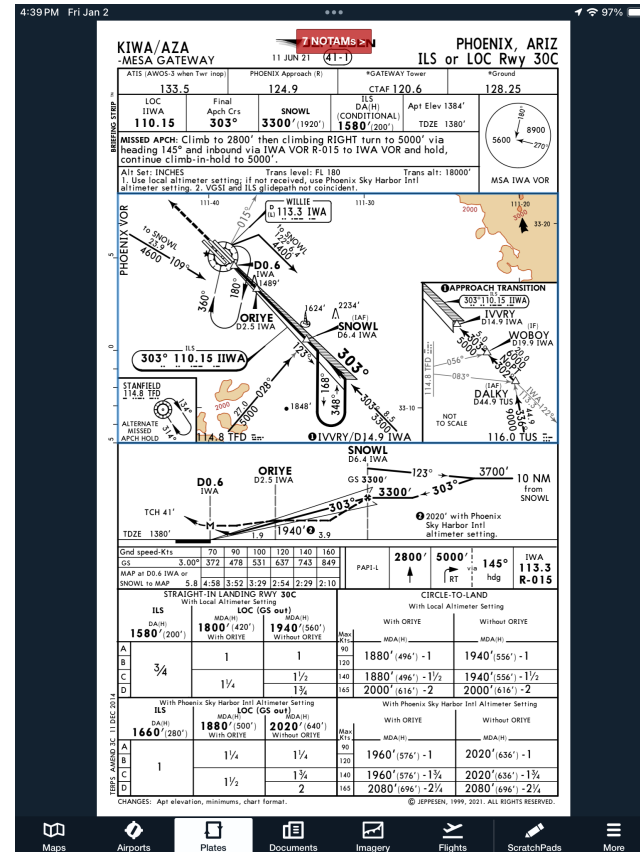
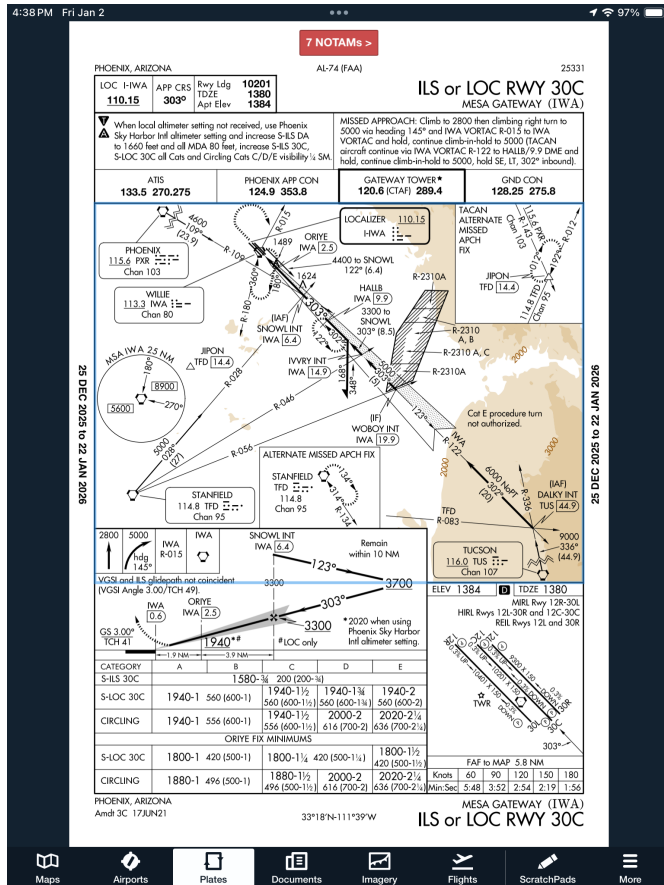
# Features in the Premium Subscription

- Expanded Performance Capabilities
- 3D View and 3D Flights
- Ability to Link a Cloud Drive – Also available in Essential



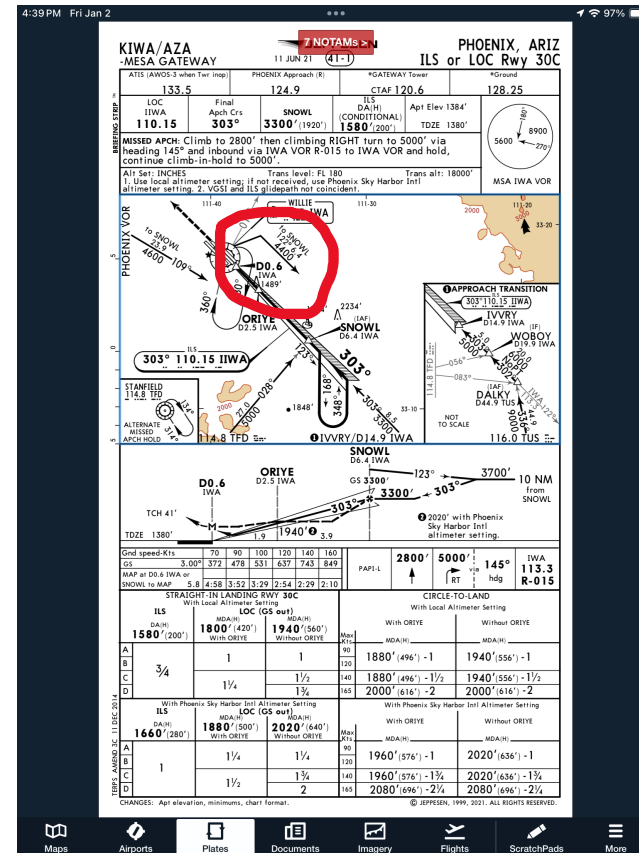
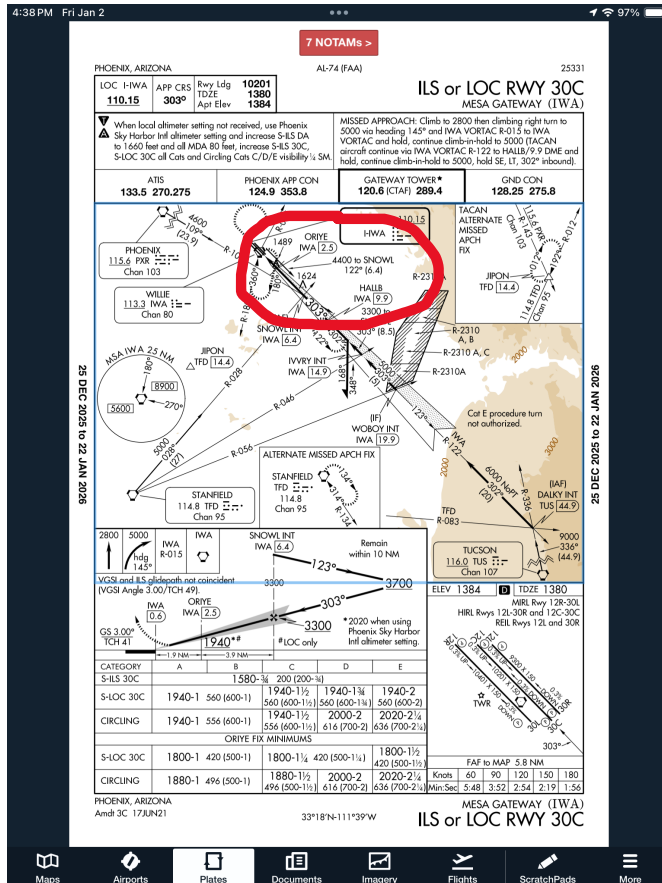
# Why you Need Jeppesen Charts

- Declutters many hard to read FAA charts – KIWA for example



# Why you Need Jeppesen Charts

- Did you miss the feeder route on the FAA chart?



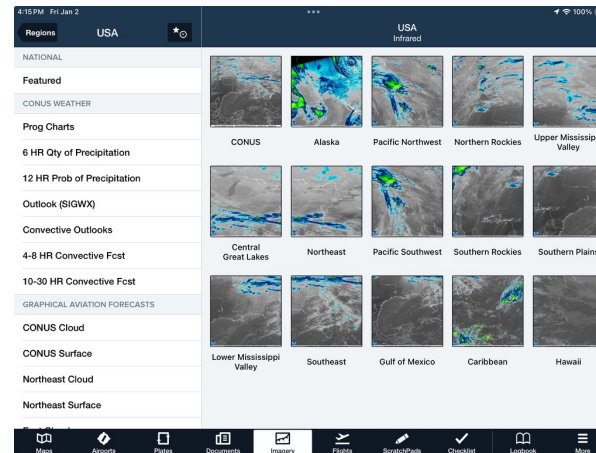
# Why you Need Jeppesen Charts

- Alternate airports restrictions are on every airport info chart
- SIDS and STARS are to Scale and can be Geo referenced
- You can charge students to teach them to use these charts



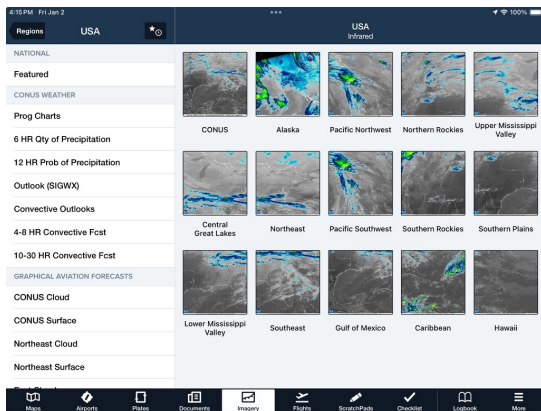
# Teaching Weather Using ForeFlight

- Weather Briefings
- Weather Imagery
- Radar and the difference between lowest tilt and composite



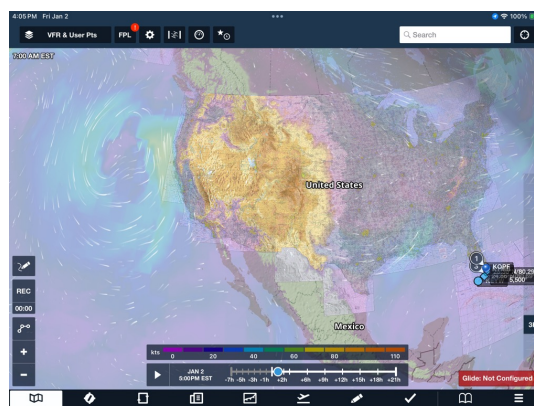
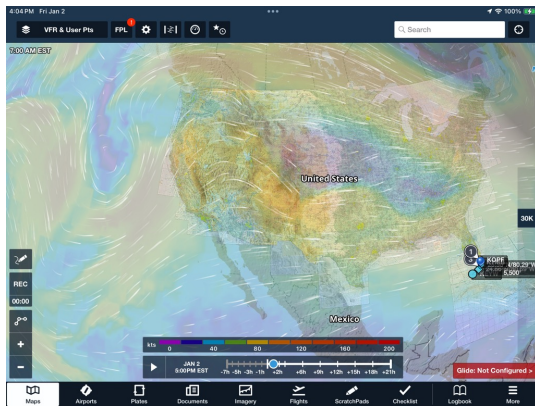
# Teaching Weather Using ForeFlight

- Satellite imagery – Infrared and Visible
- Surface Analysis Chart and What Fronts are
- Low pressure areas move with the Jetstream – Unless Cutoff



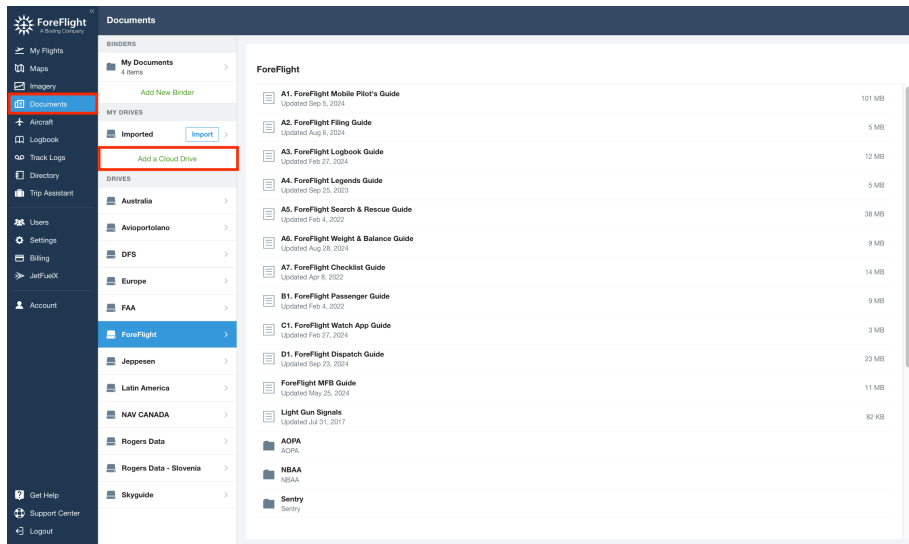
# Teaching Weather Using ForeFlight

- Animated Winds – 30,000 ft. typical Jetstream altitude
- Fonts move relative to the Low Pressure Area – Low altitude wind
- Semi permanent High and Low Pressure Areas
- Fog
- Icing



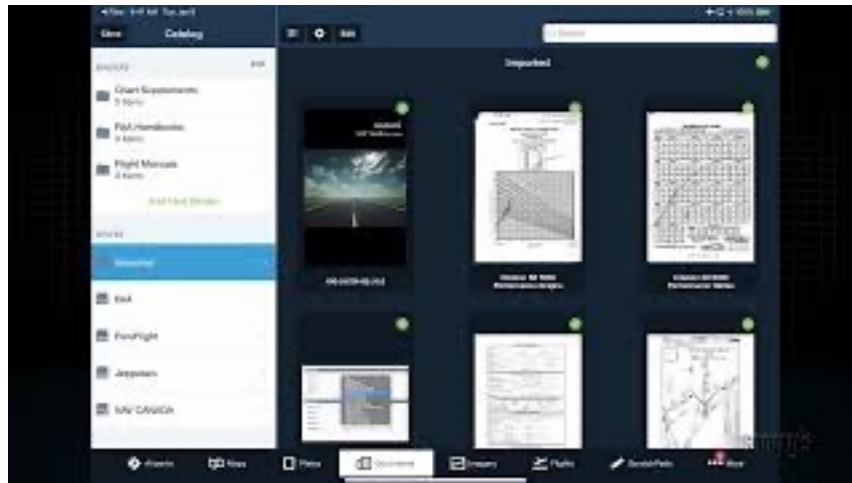
# Linking a Cloud Drive to ForeFlight

- You have everything you need to teach a lesson
- Any changes made to the folder transfer automatically
- Supports Dropbox, Box, S2 and OneDrive - Only
- Can only be set up from ForeFlight Web. Foreflight.com



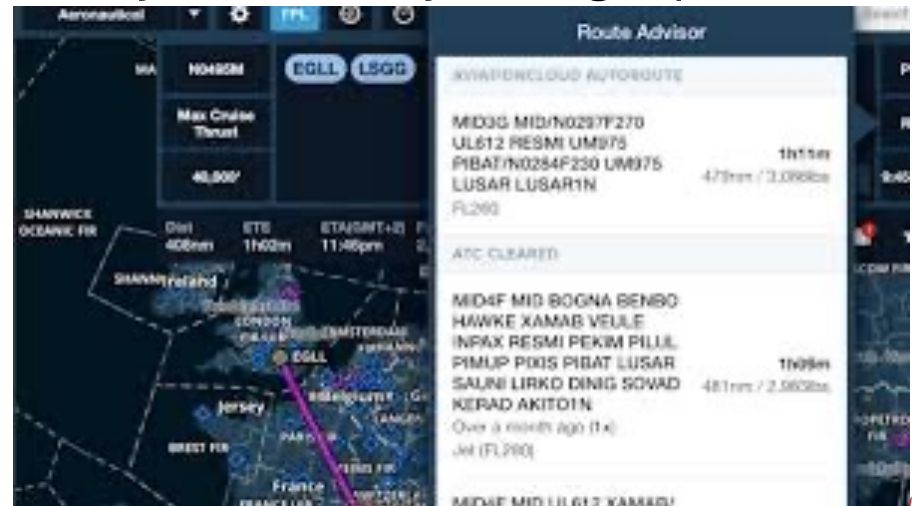
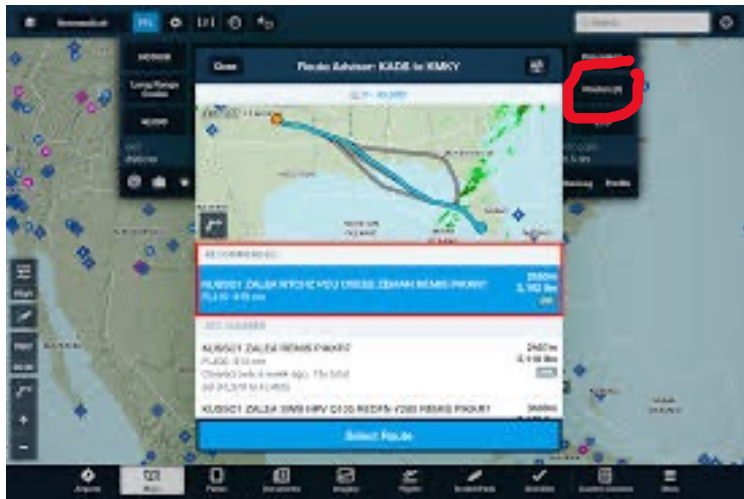
# Importing PDFs

- Can be done with Web, iPad or iPhone
- Lightning fast PDF reader
- You can annotate on the PDF
- How you can make a virtual whiteboard – Find white space and Zoom until there is just white space



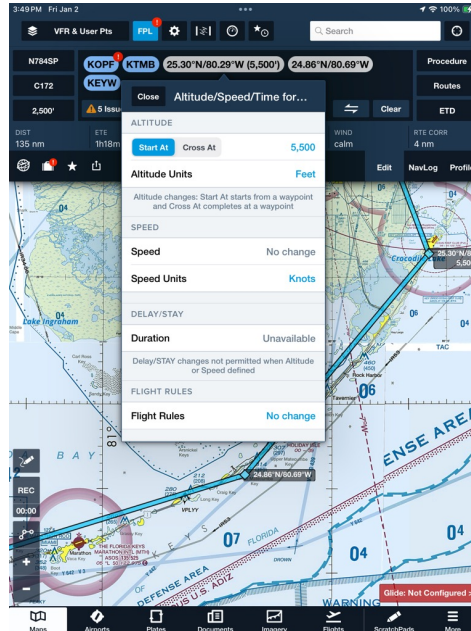
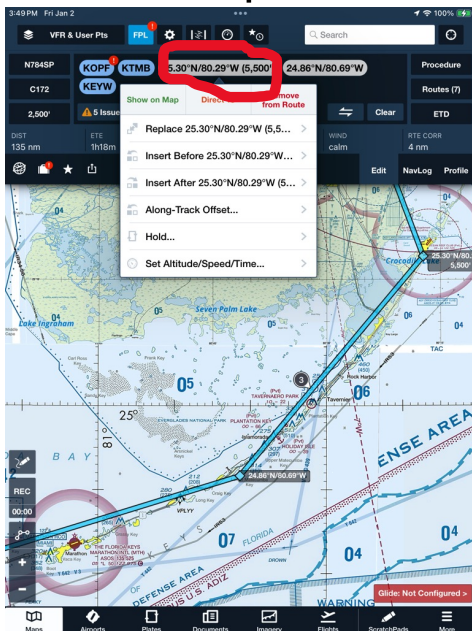
# Route Advisor

- In the Flight Plan Tab
- Gives recently given clearances/routes from one airport to another that ATC actually assigned
- Only works for IFR – No data is available for VFR Flights from ATC
- Select the route and it automatically loads into your flight plan



# Multiple Tops of Climbs

- The altitude on the left of your flight plan tab MUST be the lowest for the entire route
- You can cross at or start at an altitude at any fix in the flight plan
- In the Edit Flight plan – Click on any fix and choose – Set altitude/speed/time – Select cross at or start at and the altitude



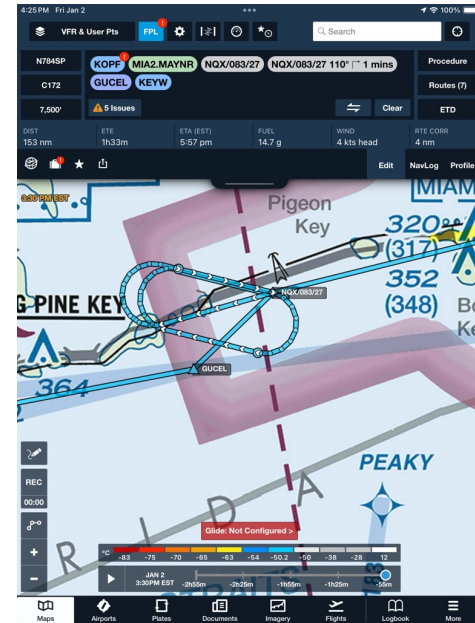
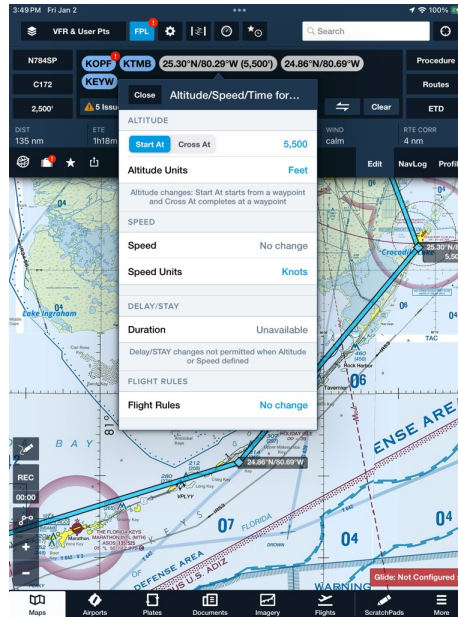
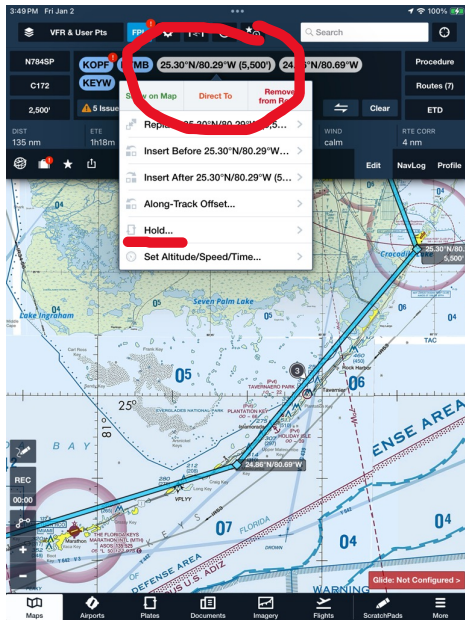
# Multiple Tops of Climbs

- From the profile view click on the fix you want to change altitudes
- You may need to zoom in to see it
- Click on the fix and select cross at or start at – input altitude



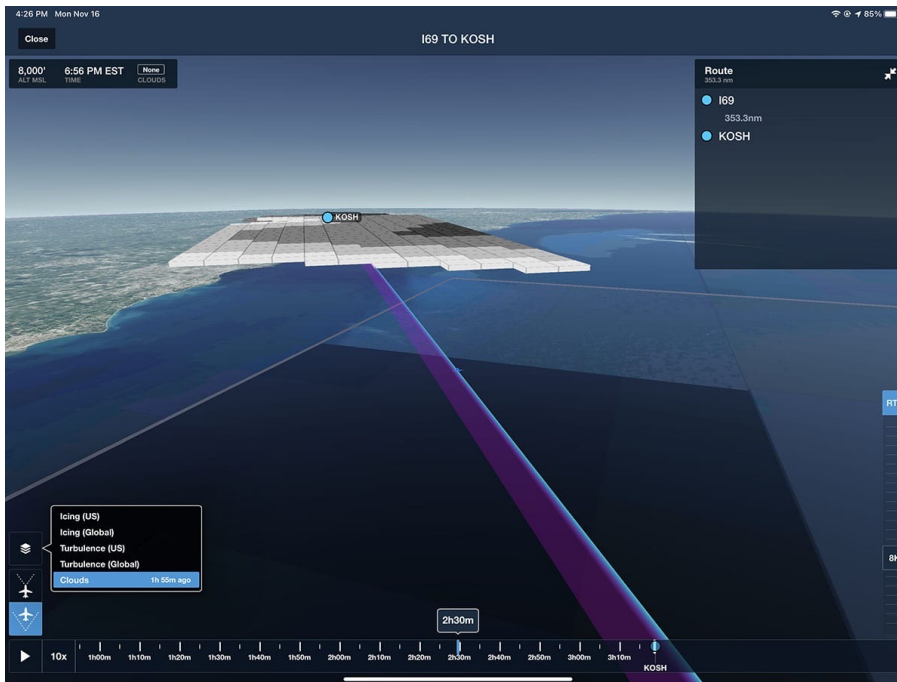
# Holding

- Can be at any fix
- Click the fix and choose HOLD
- Input the holding course, distance/time and left or right turns



# 3D Flight

- Fly your flight plan at 20x speed
- Preview the flight – It uses Google Earth as the imagery
- IFR enroute charts don't show terrain – Check your route



# 3D View

- See the airport and surrounding area
- See ADS-B traffic



# Solar Information

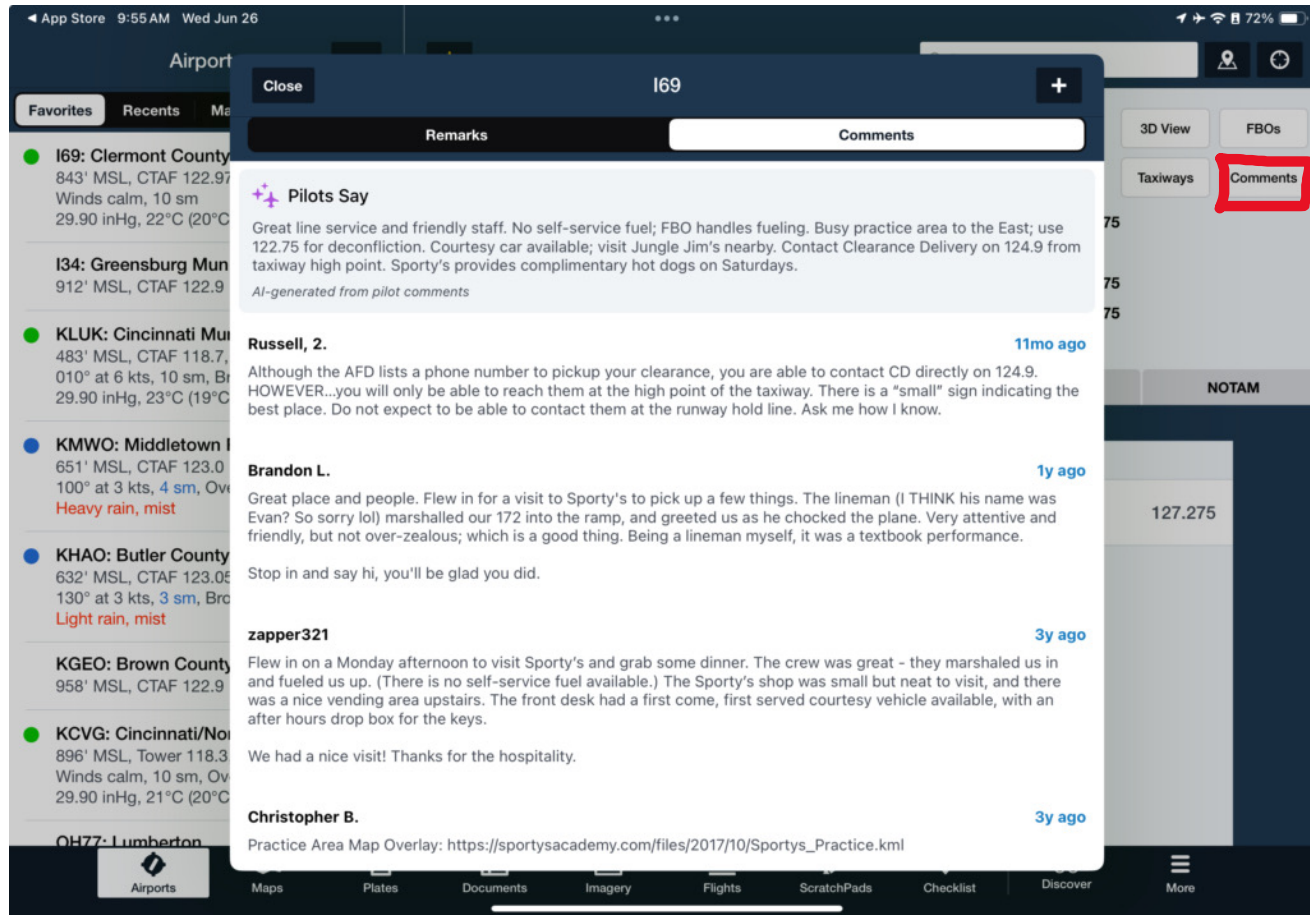
- From the airports tab, input the airport identifier
- Click on the area that has sunrise/sunset icons
- Select the solar data you want – Sunset/Civil Twilight



# AI Airport Comments

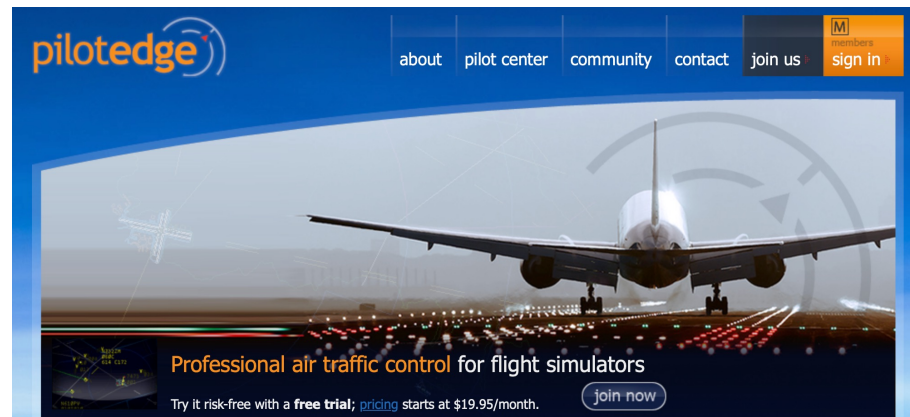
- From the airports tab, input the airport identifier
- Select Comments
- The comments are from pilots about the airport
- The first entry is an AI Summary of comments

# AI Airport Comments



# Simulators and ForeFlight

- Many broadcast GPS out
- You can connect ForeFlight to the GPS out signal
- You can use ForeFlight as if you were in the airplane
- PilotEdge and GPS out make for super realistic training



# Synthetic Vision and Sentry

- Sentry is GPS/ADS-B in/AHRS
- Tap the Synthetic Vision tab at the top of ForeFlight to use it
- Make sure you know how to connect to Sentry prior to flight
- Always carry battery back ups



## Special Announcement!

## Reminders!



CFI Study Group on FaceBook



***Join SAFE, NAFI and the Facebook CFI Study Group by Clicking on the Images Above***